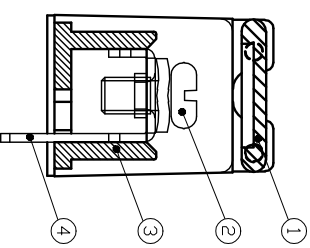
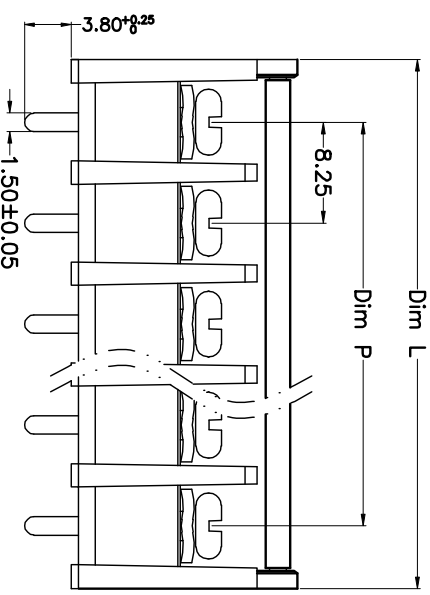
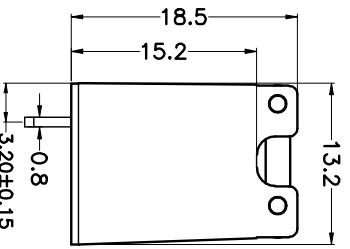
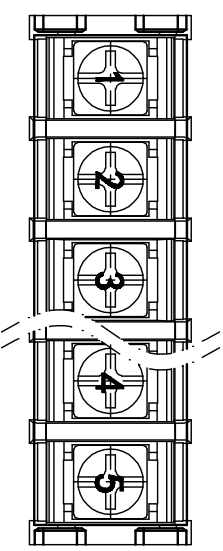
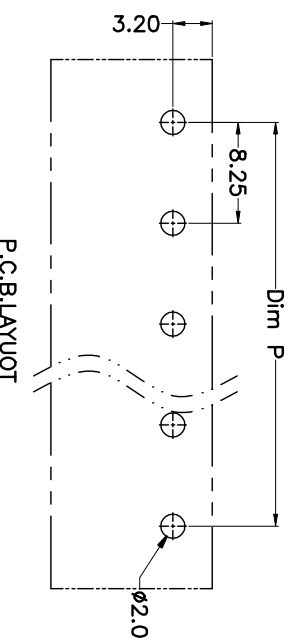


REV.	DESCRIPTION	DATE	DRAWN	APPROVED
A1	DWG.REL	2015.3.12	FANG	YANG



N=Number of Poles  
Dim P=(N-1)×8.25  
Dim L=N×8.25+2

Range Dim	Dim P	Dim L
2-6P	±0.10	±0.15
7-12P	±0.20	±0.20
13-18P	±0.25	±0.30
19-24P	±0.30	±0.40



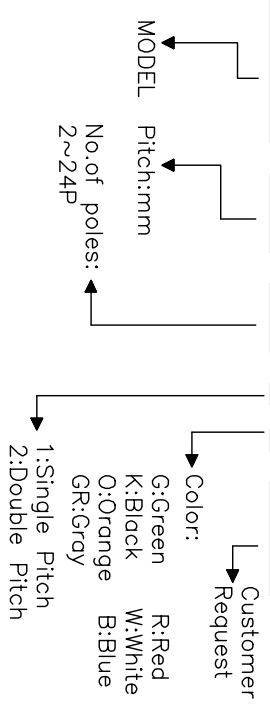
- Material
  - ①Cover : PA66,UL94V-0
  - ②Screws : M3.0 steel, Ni plated
  - ③Housing : PA66,UL94V-0
  - ④Terminal : Brass, Tin plated

- Electrical UL IEC
  - Rated voltage : 300V 450V
  - Rated current : 20A 24A
  - Insulation resistance: 500MΩ/DC500V
  - Withstanding Voltage : AC2000V/1min
  - Wire range: 22-12AWG 2.5mm<sup>2</sup>

- Mechanical
  - Operating temperature:-40°C~+105°C
  - Soldering temperature:250°C±5/5sec
  - Torque: 0.5N.m (4.43lb.in)

### HOW TO ORDER

KF-30SM-8.25-XXP-1 X-XXXXX



GENERAL TOLERANCE	ANGLE TOLERANCE	SCALE	DRAWING TYPE	CUSTOMER SHEET	1 OF 1
X: ±0.5 X: ±0.3 .XX ±0.1	X: ±5° X: ±3° .XX ±1°	1:1	DRAWING NO.	SHEET	1 OF 1

PROJECTION	TITLE
mm	KF-30SM-8.25-XXP
SHEET SIZE A4	SERIES KF-30SM

# 科奕科技有限公司