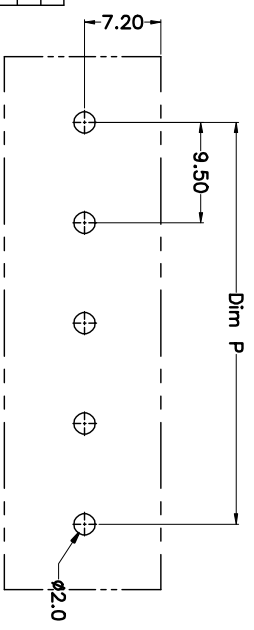
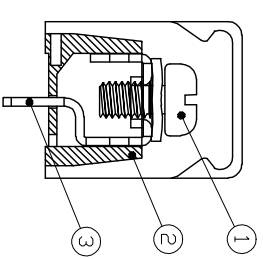
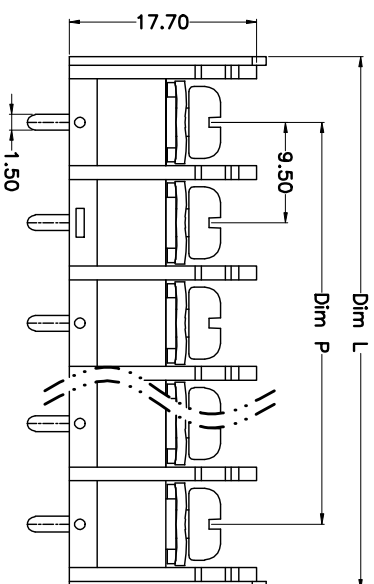
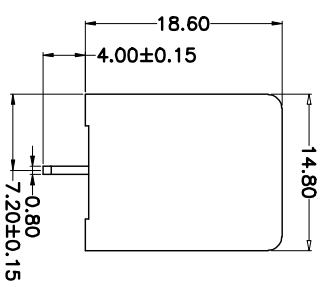
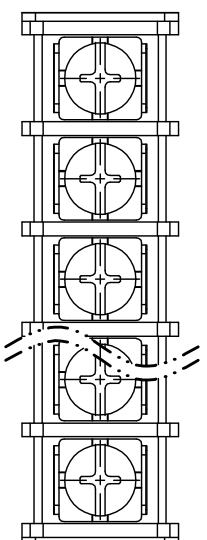


REV.	DESCRIPTION	DATE	DRAWN	APPROVED
A1	DWG.REL	2015.3.12	FANG	YANG

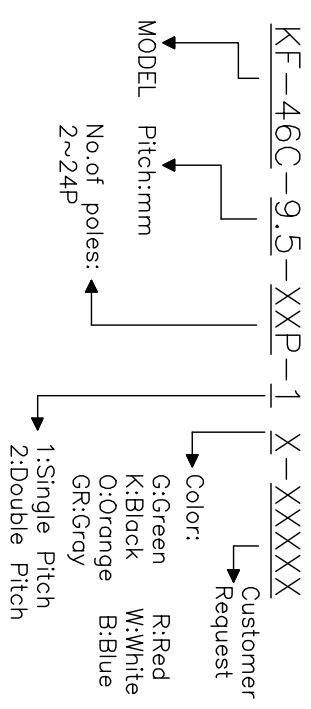


N=Number of Poles
Dim. P=(N-1)x9.5
Dim. L=Nx9.5+2.9

Poles	Dim. P	Dim. L
2-6P	±0.10	±0.15
7-12P	±0.20	±0.20
13-18P	±0.25	±0.30
19-24P	±0.30	±0.40

- Material
 @Screws : M4.0 steel, Ni plated
 @Housing : PA66,UL94V-0
 @Terminal : Brass, Tin plated
- Electrical
 UL IEC
 Rated voltage : 300V 750V
 Rated current : 25A 32A
 Insulation resistance: 500MΩ/DC500V
 Withstanding Voltage : AC2000V/1min
 Wire range: 22-12AWG 4.0mm²
- Mechanical
 Operating temperature:-40°C~+105°C
 Soldering temperature:250°C±5/5sec
 Torque: 1.2N.m (10.53Lb.in)

HOW TO ORDER



GENERAL TOLERANCE	ANGLE TOLERANCE	SCALE	DRAWING TYPE	CUSTOMER SHEET	1 OF 1
X. ±0.5	X. ±5'	1:1			
X. ±0.3	X. ±3'				
.XX ±0.1	.XX ±1'				

PROJECTION	TITLE
mm	KF-46C-9.5-XXP
SHEET SIZE A4	SERIES KF-46C

科奕科技有限公司