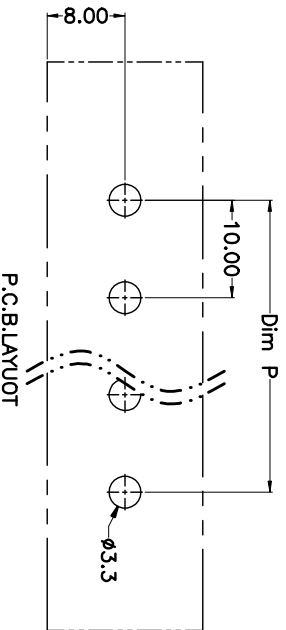
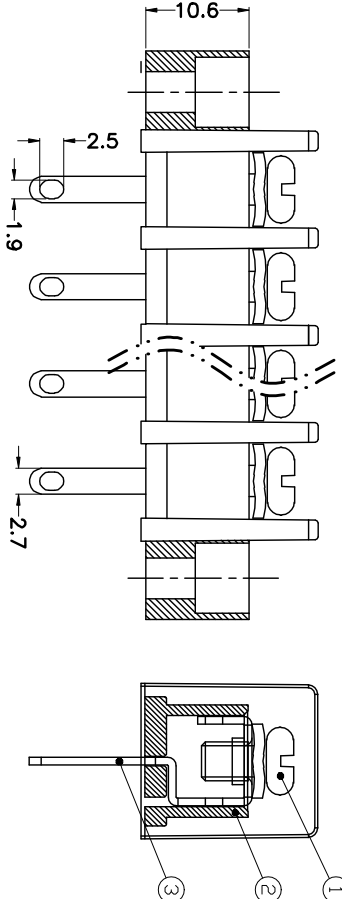
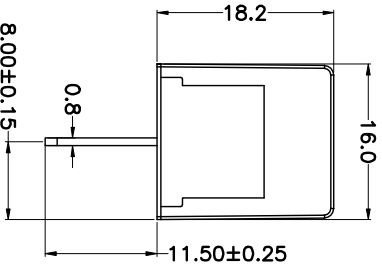
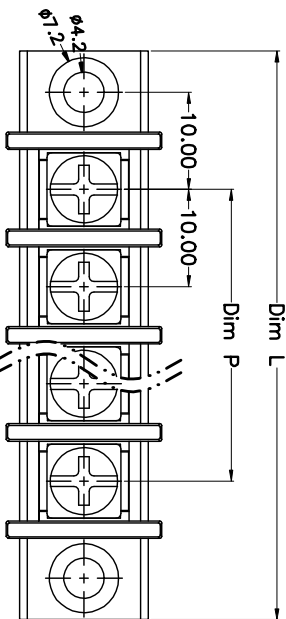


REV.	DESCRIPTION	DATE	DRAWN	APPROVED
A1	DWG.REL	2015.3.12	FANG	YANG

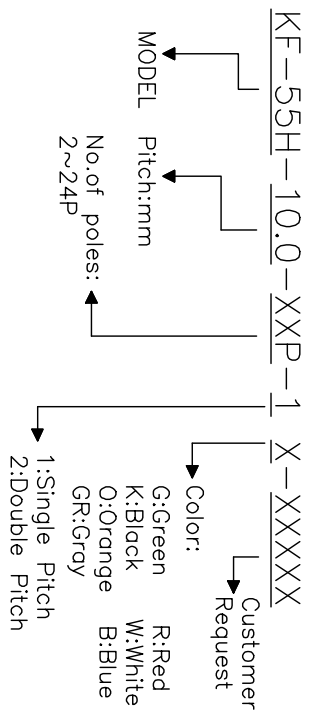


N=Number of Poles  
 Dim P=(N-1)X10.00  
 Dim L=Nx(10.00+18.5)

Range	Dim P	Dim L
2-6P	±0.10	±0.15
7-12P	±0.20	±0.20
13-16P	±0.25	±0.30
19-24P	±0.30	±0.40

- Material
  - ①Screws : M4.0 steel, Ni plated
  - ②Housing : PA66,UL94V-0
  - ③Terminal : Brass, Tin plated
- Electrical
  - UL IEC
  - Rated voltage : 300V 750V
  - Rated current : 25A 32A
  - Insulation resistance: 500MΩ/DC500V
  - Withstanding Voltage : AC2000V/1min
  - Wire range: 22-12AWG 4.0mm<sup>2</sup>
- Mechanical
  - Operating temperature:-40°C~+105°C
  - Soldering temperature:250°C±5/5sec
  - Torque: 1.2N.m (10.53Lb.in)

### HOW TO ORDER



### GENERAL TOLERANCE

ANGLE TOLERANCE	±5'
X.	±0.5
.X	±0.3
.XX	±0.1

### PROJECTION

UNITS	mm
SHEET SIZE	A4

TITLE KF-55H-10.0-XXP

SERIES KF-55H

DRAWING TYPE	CUSTOMER	SHEET	1 OF 1
SCALE	1:1	SHEET	1 OF 1
DRAWING NO.			

科奕科技有限公司