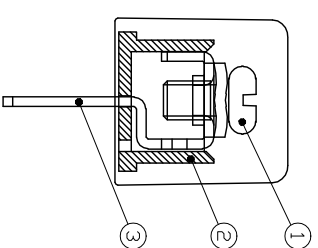
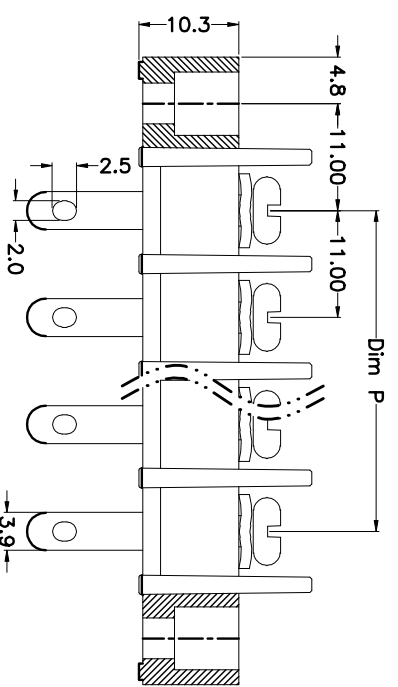
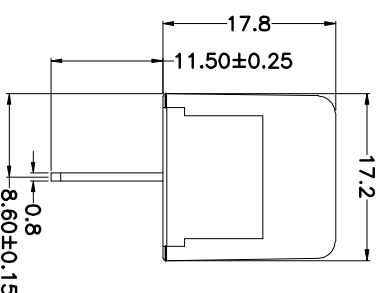
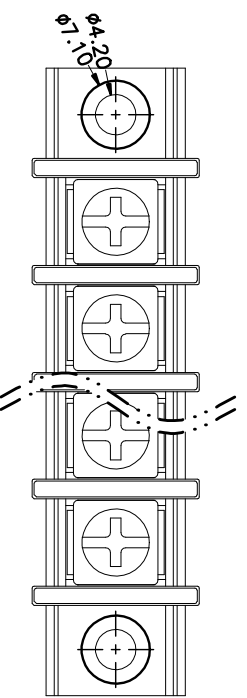
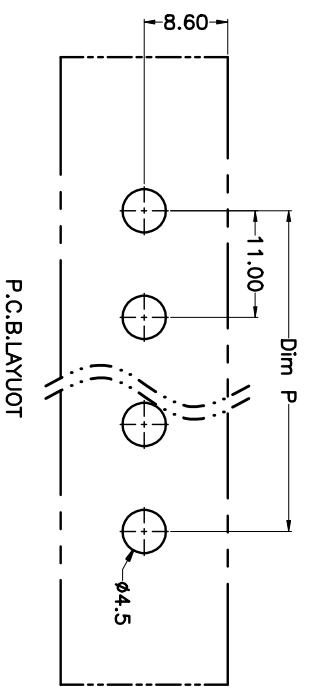


REV.	DESCRIPTION	DATE	DRAWN	APPROVED
A1	DWG.REL	2015.3.12	FANG	YANG



N=Number of Poles
Dim P=(N-1)X11.00

Poles/Dim	Dim P	Dim L
2-6P	±0.10	±0.15
7-12P	±0.20	±0.20
13-18P	±0.25	±0.30
19-24P	±0.30	±0.40

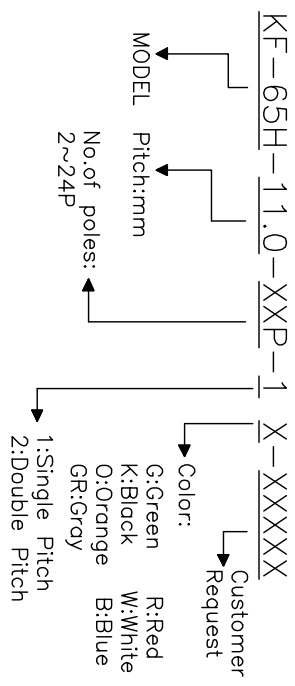


- Material
 ØScrews : M4.0 steel, Ni plated
 ØHousing : PA66,UL94V-0
 ØTerminal : Brass, Tin plated

- Electrical
 UL IEC
 Rated voltage : 300V 750V
 Rated current : 25A 32A
 Insulation resistance: 500MΩ/DC500V
 Withstanding Voltage : AC2000V/1min
 Wire range: 22-12AWG 4.0mm²

- Mechanical
 Operating temperature:-40°C~+105°C
 Soldering temperature:250°C±5/5sec
 Torque: 1.2N.m (10.53lb.in)

HOW TO ORDER



GENERAL TOLERANCE	ANGLE TOLERANCE
X. ±0.5	X. ±5'
.X ±0.3	.X ±3'
.XX ±0.1	.XX ±1'

DRAWING TYPE	CUSTOMER
SCALE	1:1
DRAWING NO.	SHEET 1 OF 1

PROJECTION	TITLE
UNITS SHEET SIZE A4	KF-65H-11.0-XXP SERIES KF-65H

科奕科技有限公司