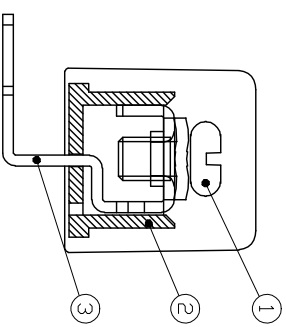
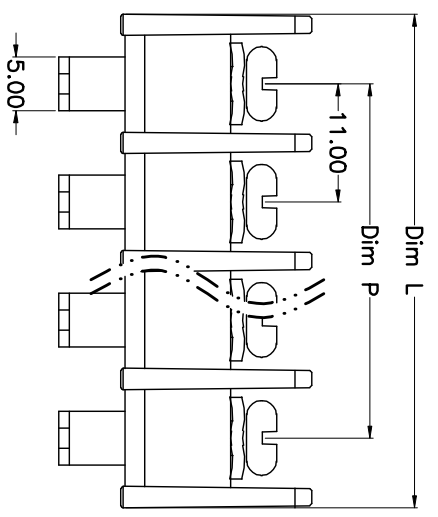
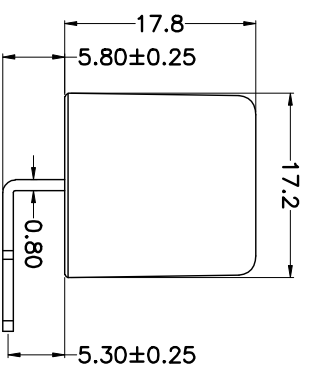
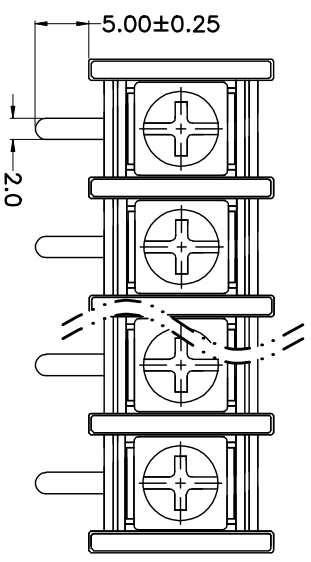
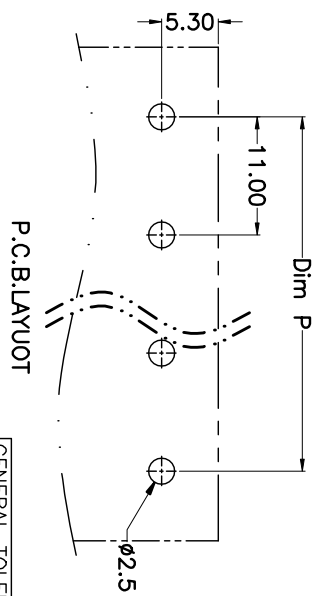


REV.	DESCRIPTION	DATE	DRAWN	APPROVED
A1	DWG.REL	2015.3.12	FANG	YANG



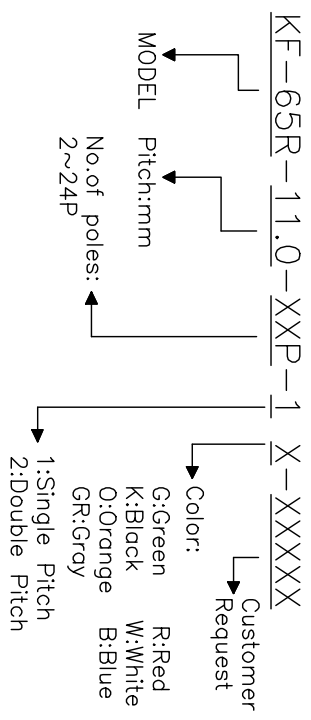
N=Number of Poles  
 Dim P=(N-1)x11.00  
 Dim L=Nx11.00+2

Poles	Dim P	Dim L
2-6P	±0.10	±0.15
7-12P	±0.20	±0.20
13-18P	±0.25	±0.30
19-24P	±0.30	±0.40



- Material  
 @Screws : M4.0 steel, Ni plated  
 @Housing : PA66,UL94V-0  
 @Terminal : Brass, Tin plated
- Electrical  
 UL IEC  
 Rated voltage : 300V 750V  
 Rated current : 25A 32A  
 Insulation resistance: 500MΩ/DC500V  
 Withstanding Voltage : AC2000V/1min  
 Wire range: 22-12AWG 4.0mm<sup>2</sup>
- Mechanical  
 Operating temperature:-40°C~+105°C  
 Soldering temperature:250°C±5/5sec  
 Torque: 1.2N.m (10.53Lb.in)

HOW TO ORDER



GENERAL TOLERANCE	ANGLE TOLERANCE
X. ±0.5	X. ±5'
.X ±0.3	.X ±3'
.XX ±0.1	.XX ±1'

DRAWING TYPE	CUSTOMER
SCALE	1:1
SHEET	1 OF 1
DRAWING NO.	

PROJECTION	TITLE
mm	KF-65R-11.0-XXP
SHEET SIZE	SERIES
A4	KF-65R

科奕科技有限公司