

| REV. | DESCRIPTION | DATE      | DRAWN | APPROVED |
|------|-------------|-----------|-------|----------|
| A1   | DWG.REL     | 2015.3.12 | FANG  | YANG     |

- Material
  - @Cover : PA66,UL94V-0
  - @Screws : M3.0 steel, Ni plated
  - @Terminal : Brass, Tin plated
  - @Housing : PA66,UL94V-0

- Electrical
 

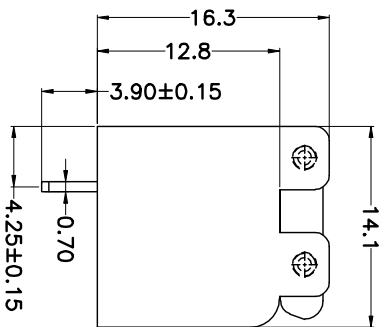
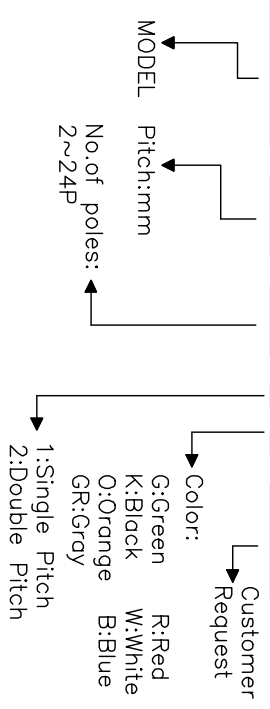
|                      |       |
|----------------------|-------|
| UL                   | IEC   |
| Rated voltage : 300V | 250V  |
| Rated current : 10A  | 17.5A |

Insulation resistance: 500MΩ/DC500V  
 Withstanding Voltage : AC2000V/1min  
 Wire range: 22-16AWG 1.5mm<sup>2</sup>

- Mechanical
  - Operating temperature: -40°C to +105°C
  - Soldering temperature: 250°C ± 5 / 5sec
  - Torque: 0.5N.m (4.43lb.in)

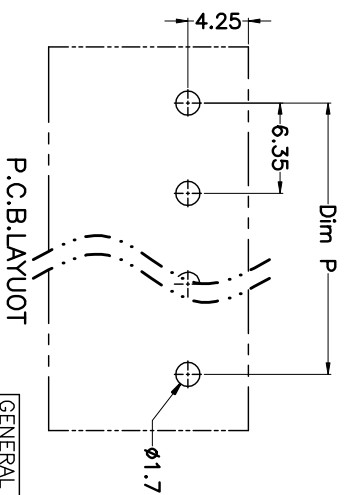
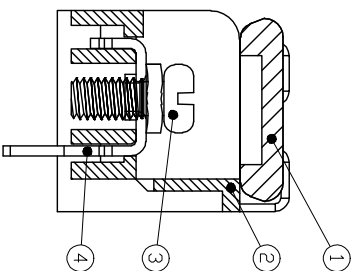
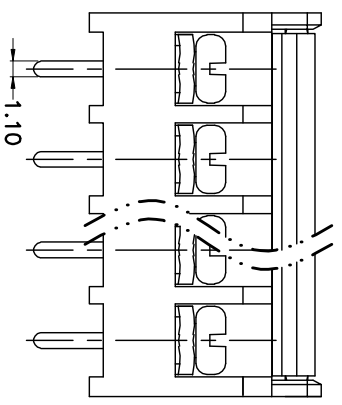
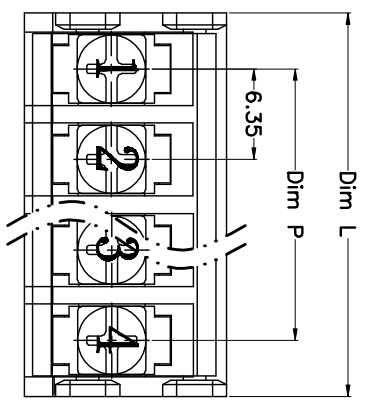
### HOW TO ORDER

HB-635M-6.35-XXP-1 X-XXXXX



N=Number of Poles  
 Dim P=(N-1)×6.35  
 Dim L=NX6.35+1.5

| Poles  | Dim P | Dim L |
|--------|-------|-------|
| 2-6P   | ±0.10 | ±0.15 |
| 7-12P  | ±0.20 | ±0.20 |
| 13-18P | ±0.25 | ±0.30 |
| 19-24P | ±0.30 | ±0.40 |



### GENERAL TOLERANCE ANGLE TOLERANCE

|     |      |      |     |
|-----|------|------|-----|
| X.  | ±0.5 | X.   | ±5' |
| .X  | ±0.3 | .X.  | ±3' |
| .XX | ±0.1 | .XX. | ±1' |

| DRAWING TYPE | CUSTOMER | SHEET | 1 OF 1 |
|--------------|----------|-------|--------|
| SCALE        | 1:1      | SHEET | 1 OF 1 |
| DRAWING NO.  |          |       |        |

### PROJECTION UNITS

|            |    |        |                  |
|------------|----|--------|------------------|
| mm         | mm | TITLE  | HB-635M-6.35-XXP |
| SHEET SIZE | A4 | SERIES | HB-635M          |

# 科奕科技有限公司