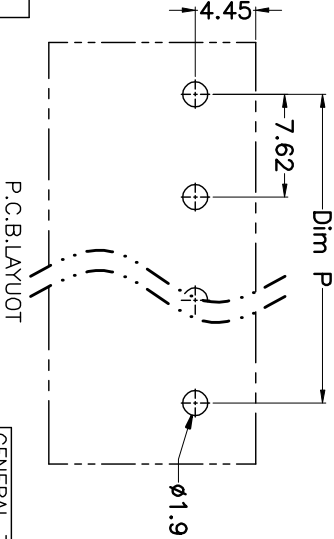
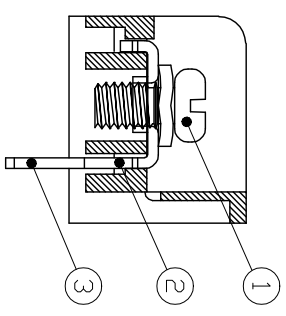
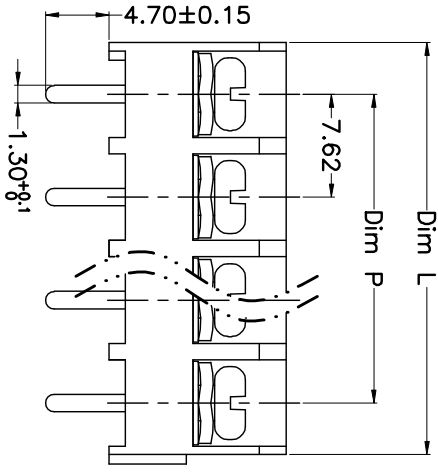
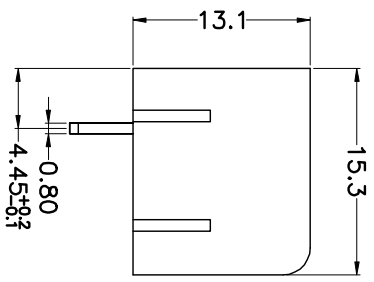
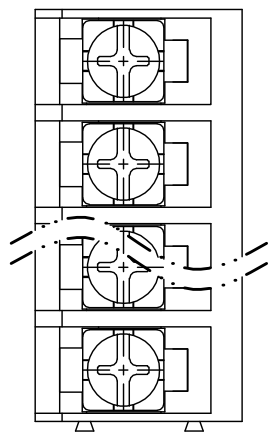


REV.	DESCRIPTION	DATE	DRAWN	APPROVED
A1	DWG.REL	2015.3.12	FANG	YANG



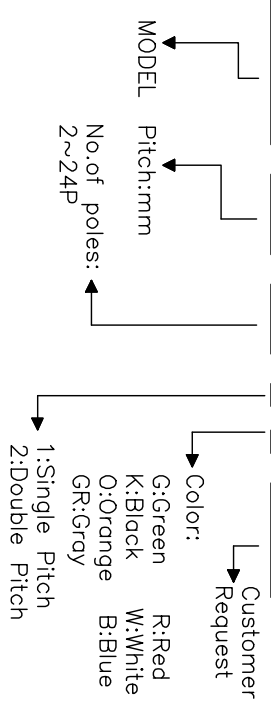
Poles	Dim P	Dim L
2-6P	±0.10	±0.15
7-12P	±0.20	±0.20
13-18P	±0.25	±0.30
19-24P	±0.30	±0.40

N=Number of Poles  
 Dim P=(N-1)x7.62  
 Dim L=N\*7.62

- Material
  - ØScrews : M3.5 steel, Ni plated
  - ØTerminal : Brass, Tin plated
  - ØHousing : PA66,UL94V-0
- Electrical
  - UL IEC
  - Rated voltage : 300V 450V
  - Rated current : 15A 24A
  - Insulation resistance: 500MΩ/DC500V
  - Withstanding Voltage : AC2000V/1min
  - Wire range: 22-14AWG 2.5mm<sup>2</sup>
- Mechanical
  - Operating temperature:-40°C~+105°C
  - Soldering temperature:250°C±5/5sec
  - Torque: 0.8N.m (7.02lb.in)

HOW TO ORDER

HB-762-7.62-XXP-1 X-XXXXX



GENERAL TOLERANCE	ANGLE TOLERANCE
X: ±0.5	X: ±5'
.X: ±0.3	.X: ±3'
.XX: ±0.1	.XX: ±1'

DRAWING TYPE	CUSTOMER
SCALE	1:1
DRAWING NO.	SHEET 1 OF 1

PROJECTION	TITLE
UNITS	mm
SHEET SIZE	A4
SERIES	HB-762

科奕科技有限公司