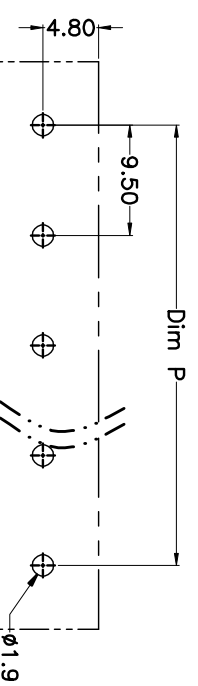
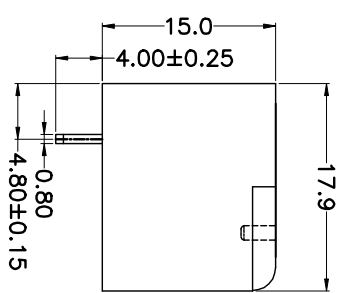
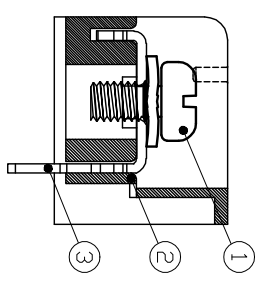
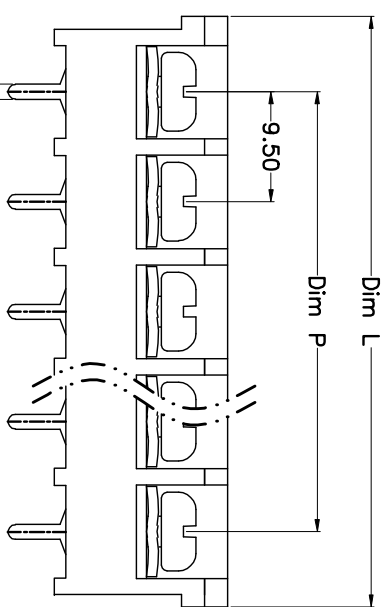
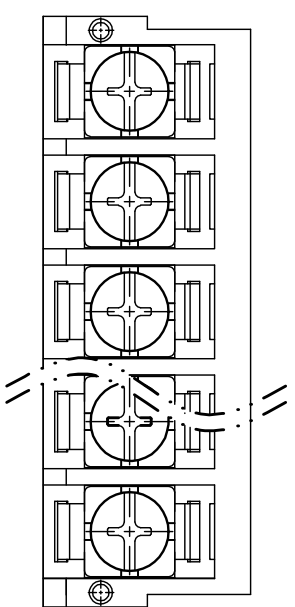


REV.	DESCRIPTION	DATE	DRAWN	APPROVED
A1	DWG.REL	2015.3.12	FANG	YANG



N=Number of Poles  
Dim P=(N-1)X9.50  
Dim L=Nx9.50+3.5

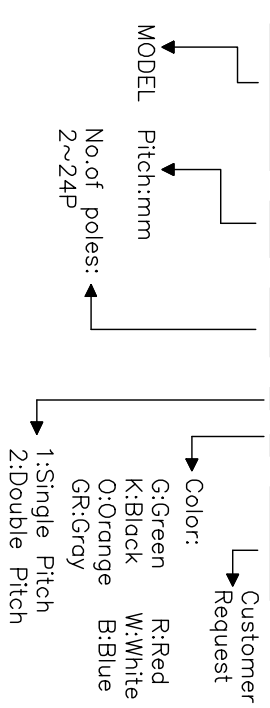
Poles	Dim P	Dim L
2-6P	±0.10	±0.15
7-12P	±0.20	±0.20
13-18P	±0.25	±0.30
19-24P	±0.30	±0.40

- Material
  - ØScrews : M4.0 steel, Ni plated
  - ØHousing : PA66,UL94V-0
  - ØTerminal : Brass, Tin plated
- Electrical
 

UL	IEC
Rated voltage : 300V	750V
Rated current : 25A	32A
Insulation resistance: 500MΩ/DC500V	
Withstanding Voltage : AC2000V/1min	
Wire range: 22-12AWG	4.0mm <sup>2</sup>
- Mechanical
  - Operating temperature: -40°C ~ +105°C
  - Soldering temperature: 250°C ±5/5sec
  - Torque: 1.2N.m (10.53lb.in)

### HOW TO ORDER

HB-951-9.5-XXP-1 X-XXXXX



### GENERAL TOLERANCE ANGLE TOLERANCE

X.	±0.5	X.	±5'
.X	±0.3	.X.	±3'
.XX	±0.1	.XX.	±1'

DRAWING TYPE	CUSTOMER	SHEET	1 OF 1
SCALE	1:1	SHEET	1 OF 1
DRAWING NO.			

PROJECTION	TITLE
mm	HB-951-9.50-XXP
SHEET SIZE	A4
SERIES	HB-951

# 科奕科技有限公司