

REV.	DESCRIPTION	DATE	DRAWN	APPROVED
A1	DWG.REL	2015.3.12	FANG	YANG

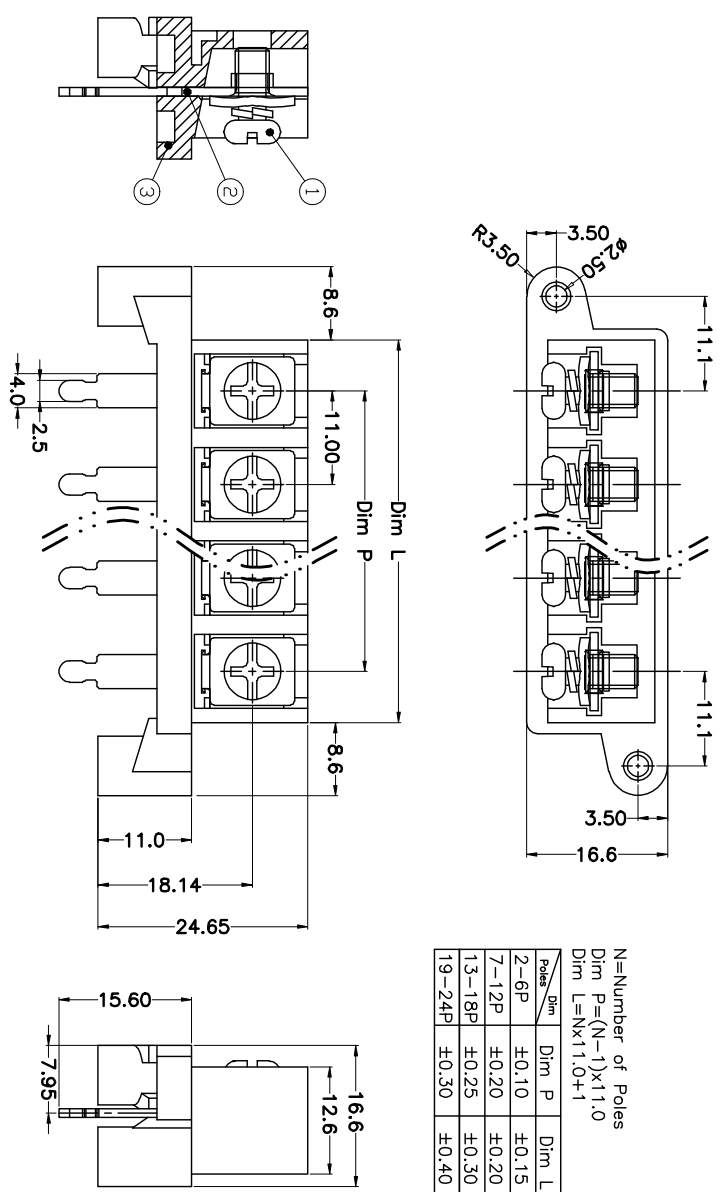
- Material
  - ⊙Screws : M4.0 steel, Ni plated
  - ⊙Terminal : Brass, Gold plated
  - ⊙Housing : PA66,UL94V-0

- Electrical
  - UL IEC
  - Rated voltage : 300V 250V
  - Rated current : 30A 41A
  - Insulation resistance: 500MΩ/DC500V
  - Withstanding Voltage : AC2000V/1min
  - Wire range: 22-10AWG 6.0mm<sup>2</sup>

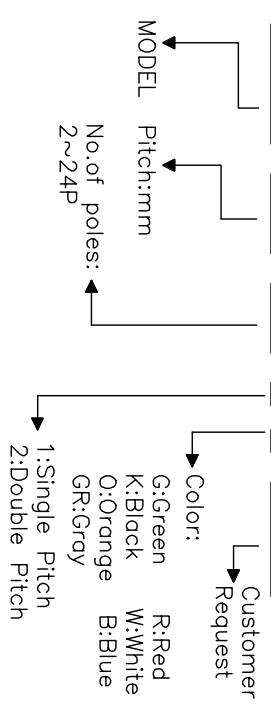
- Mechanical
  - Operating temperature: -40°C ~ +105°C
  - Soldering temperature: 250°C ± 5 / 5sec
  - Torque: 1.2N.m (10.53Lb.in)

N=Number of Poles  
Dim P=(N-1)x11.0  
Dim L=Nx11.0+1

Poles	Dim P	Dim L
2-6P	±0.10	±0.15
7-12P	±0.20	±0.20
13-18P	±0.25	±0.30
19-24P	±0.30	±0.40



### HOW TO ORDER



GENERAL TOLERANCE		ANGLE TOLERANCE		PROJECTION	TITLE
X.	±0.5	X.	±5'	⊕	KF-13-11.00-XXP
.X	±0.3	.X.	±3'	mm	
.XX	±0.1	.XX.	±1'	A4	SERIES KF-13
DRAWING TYPE CUSTOMER		SCALE		SHEET SIZE	
1:1		1:1		A4	
DRAWING NO.		SHEET		SERIES	
		1 OF 1		KF-13	

科奕科技有限公司