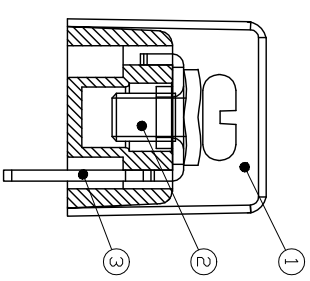
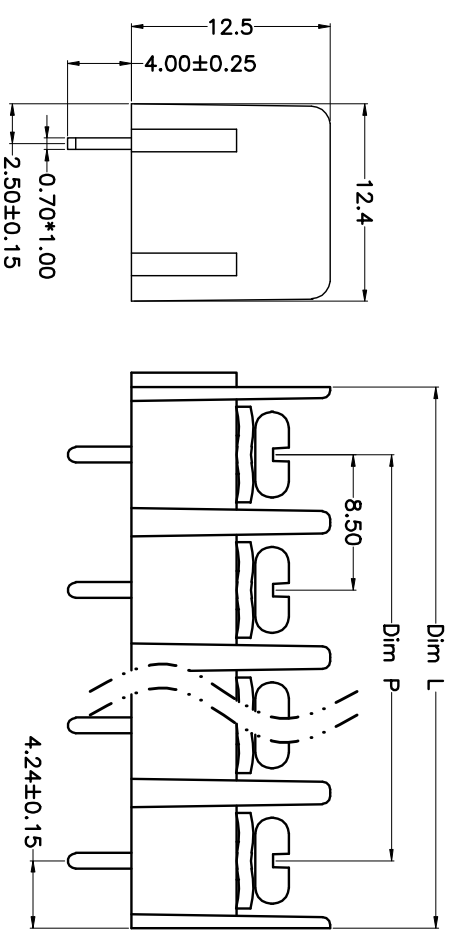
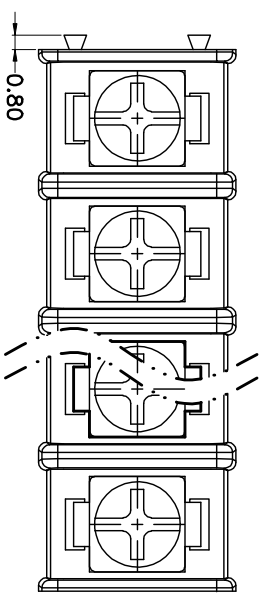


REV.	DESCRIPTION	DATE	DRAWN	APPROVED
A1	DWG.REL	2015.3.12	FANG	YANG



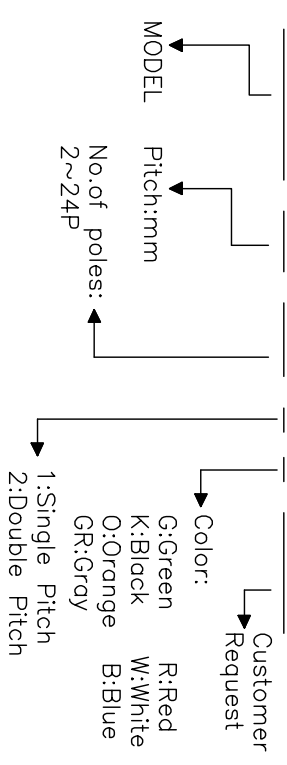
- Material
 - ØHousing : PA66,UL94V-0
 - ØScrews : M3 steel, Ni plated
 - ØTerminal : Brass, Tin plated

- Electrical
 - UL IEC
 - Rated voltage : 300V 450V
 - Rated current : 20A 24A
 - Insulation resistance: 500MΩ/DC500V
 - Withstanding Voltage : AC2000V/1min
 - Wire range: 22-14AWG 2.5mm²

- Mechanical
 - Operating temperature: -40°C~+105°C
 - Soldering temperature:250°C±5/5sec
 - Torque: 0.5N.m (4.43lb.in)

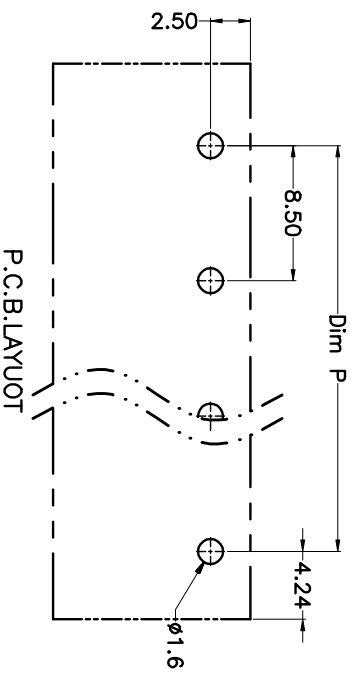
HOW TO ORDER

KF-850-8.5-XXP-1 X-XXXXXX



N=Number of Poles
Dim P=(N-1)*8.50
Dim L=N*8.50

Poles	Dim P	Dim L
2-6P	±0.10	±0.15
7-12P	±0.20	±0.20
13-18P	±0.25	±0.30
19-24P	±0.30	±0.40



GENERAL TOLERANCE		ANGLE TOLERANCE	
X.	±0.5	X.	±5°
.X	±0.3	.X.	±3°
.XX	±0.1	.XX.	±1°
DRAWING TYPE	CUSTOMER	SCALE	1:1
DRAWING NO.		SHEET	1 OF 1

PROJECTION	TITLE
mm	KF-850-8.50-XXP
SHEET SIZE	A4
SERIES	KF-850

科奕科技有限公司