

REV.	DESCRIPTION	DATE	DRAWN	APPROVED
A1	DWG.REL	2015.3.12	FANG	YANG

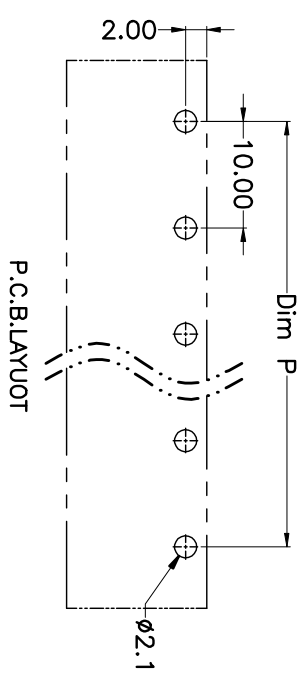
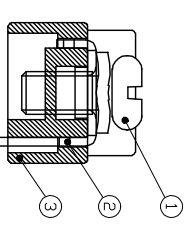
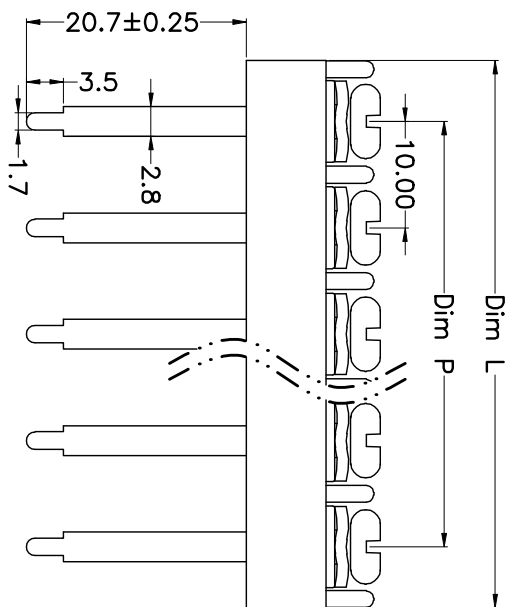
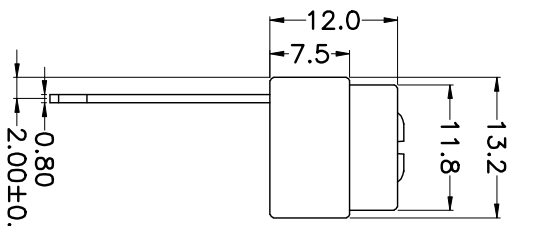
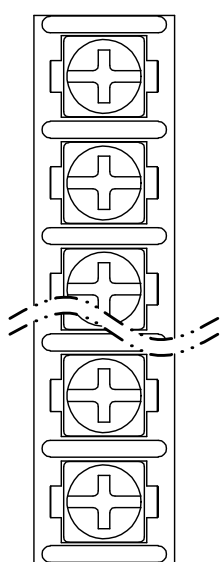
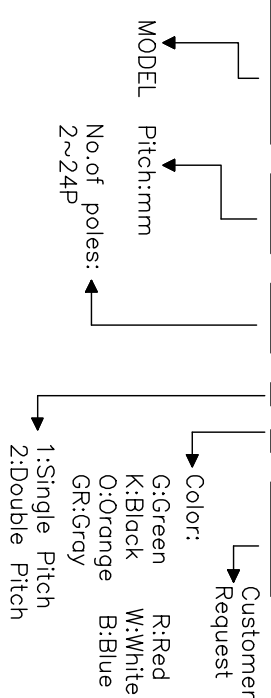
- Material
  - ØScrews : M4.0 steel, Ni plated
  - ØTerminal : Brass, Tin plated
  - ØHousing : PA66,UL94V-0

- Electrical UL IEC
  - Rated voltage : 300V 750V
  - Rated current : 25A 32A
  - Insulation resistance: 500MΩ/DC500V
  - Withstanding Voltage : AC2000V/1min
  - Wire range: 22-12AWG 4.0mm<sup>2</sup>

- Mechanical
  - Operating temperature: -40°C ~ +105°C
  - Soldering temperature: 250°C ±5/5sec
  - Torque: 1.2N.m (10.53Lb.in)

### HOW TO ORDER

KF-10000-10.0-XXP-1 X-XXXXX



N=Number of Poles  
Dim P=(N-1)X10.00  
Dim L=Nx10.00+1.5

Poles	Dim P	Dim L
2-6P	±0.10	±0.15
7-12P	±0.20	±0.20
13-18P	±0.25	±0.30
19-24P	±0.30	±0.40

GENERAL TOLERANCE	ANGLE TOLERANCE
X. ±0.5	X. ±5'
.X ±0.3	.X ±3'
.XX ±0.1	.XX ±1'

DRAWING TYPE	CUSTOMER
SCALE	1:1
DRAWING NO.	SHEET 1 OF 1

PROJECTION	TITLE
UNITS mm	KF-10000-10.0-XXP
SHEET SIZE A4	SERIES KF-10000

# 科奕科技有限公司