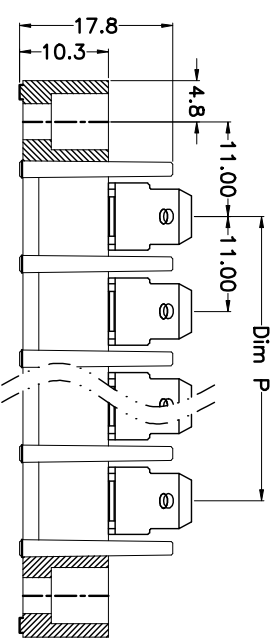
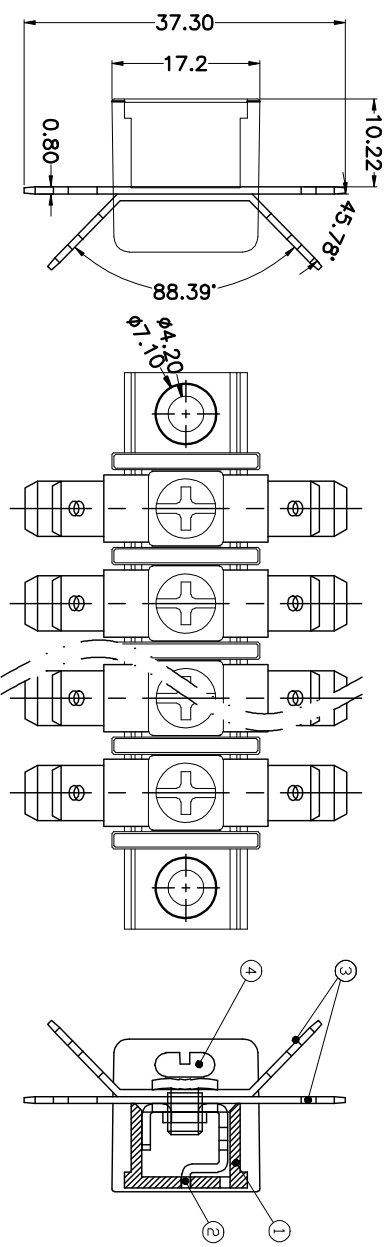


REV.	DESCRIPTION	DATE	DRAWN	APPROVED
A1	DWG.REL	2015.3.12	FANG	YANG

- Material
 - ①Housing : PA66, UL94V-0
 - ②Terminal : Brass, Ni plated
 - ③Plane film: Brass, Ni plated
 - ④Screws : M4.0 steel, Ni plated

- Electrical UL IEC
 - Rated voltage : 300V 750V
 - Rated current : 25A 32A
 - Insulation resistance: 500MΩ/DC500V
 - Withstanding Voltage : AC2000V/1min
 - Wire range: 22-12AWG 4.0mm²

- Mechanical
 - Operating temperature:-40°C~+105°C
 - Soldering temperature:250°C±5/5sec
 - Torque: 1.2N.m (10.53lb.in)



N=Number of Poles
Dim P=(N-1)x11.00

Poles	Dim P	Dim L
2-6P	±0.10	±0.15
7-12P	±0.20	±0.20
13-18P	±0.25	±0.30
19-24P	±0.30	±0.40

GENERAL TOLERANCE	ANGLE TOLERANCE
X: ±0.5	X: ±5'
.X: ±0.3	.X: ±3'
.XX: ±0.1	.XX: ±1'

DRAWING TYPE	CUSTOMER
SCALE	1:1
SHEET	1 OF 1
DRAWING NO.	

HOW TO ORDER
KF-65B-11.0-XXP-1 X-XXXXX

MODEL Pitch:mm
No.of poles:
2~24P

Color:
G:Green
K:Black
O:Orange
GR:Gray
R:Red
W:White
B:Blue

Customer Request
1:Single Pitch
2:Double Pitch

PROJECTION	TITLE
UNITS mm	KF-65B-11.0-XXP
SHEET SIZE A4	SERIES KF-65B

科奕科技有限公司