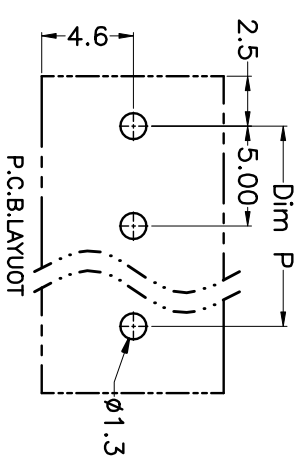
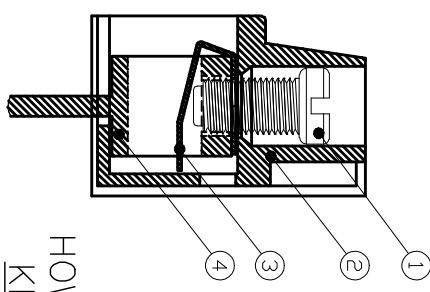
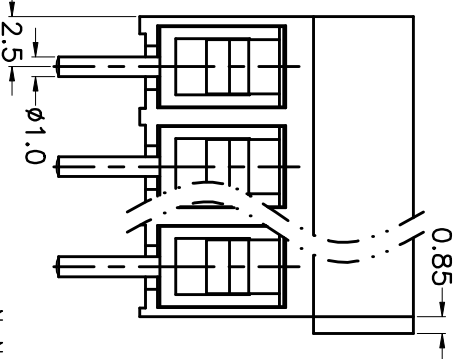
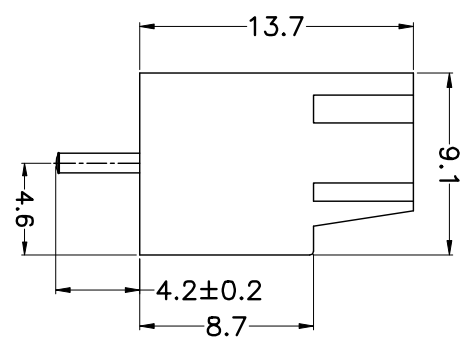
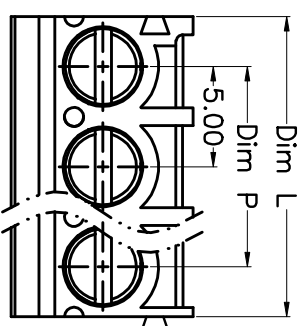


REV.	DESCRIPTION	DATE	DRAWN	APPROVED
A1	DWG.REL	2015.3.12	FANG	YANG



N=Number of Poles
 Dim A P=(N-1)x5.00
 Dim L L=Nx5.00

Poles	Dim P	Dim L
2-6P	±0.10	±0.15
7-12P	±0.20	±0.20
13-18P	±0.25	±0.30
19-24P	±0.30	±0.40

GENERAL TOLERANCE		ANGLE TOLERANCE	
X	±0.5	X	±5°
X	±0.3	X	±3°
.XX	±0.1	.XX	±1°

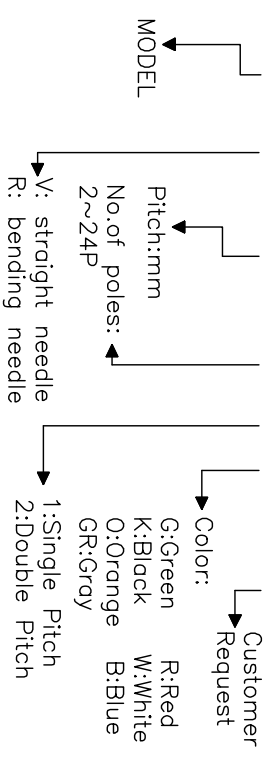
DRAWING TYPE	CUSTOMER
SCALE	1:1
DRAWING NO.	SHEET 1 OF 1

- Material
 - ⊙Screws : M3.0 steel, Zinc plated,
 - “_” slot type
 - ⊙Housing : PA66, UL94V-0
 - ⊙Reed : Phosphor bronze, Ni plated or stainless steel
 - ⊙Pin header : Brass, Tin plated

- Electrical
 - UL IEC
 - Rated voltage : 300V 250V
 - Rated current : 12A 25A
 - Insulation resistance: 500MΩ/DC500V
 - Withstanding Voltage : AC2000V/1min
 - Wire range: 22-14AWG 2.5mm²

- Mechanical
 - Operating temperature: -40℃~+105℃
 - Soldering temperature: 250℃±5/5sec
 - Torque: 0.5N.m (4.43lb.in)
 - Strip length: 4.5-5mm

HOW TO ORDER
 KF306 V -5.0-XXP-1 X-XXXXXX



PROJECTION	TITLE
UNITS mm	KF306V-5.0-XXP
SHEET SIZE A4	SERIES KF306V

科奕科技有限公司