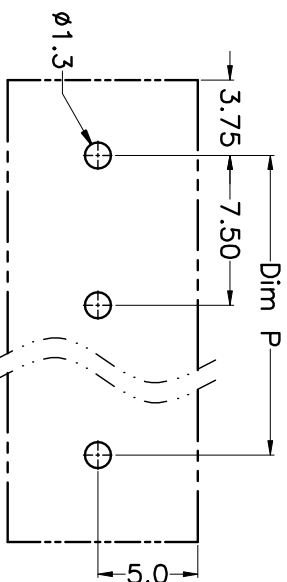
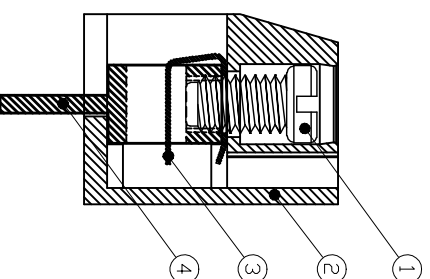
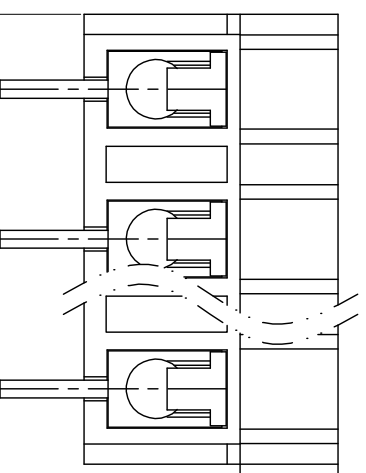
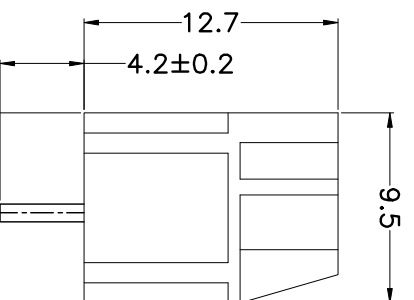
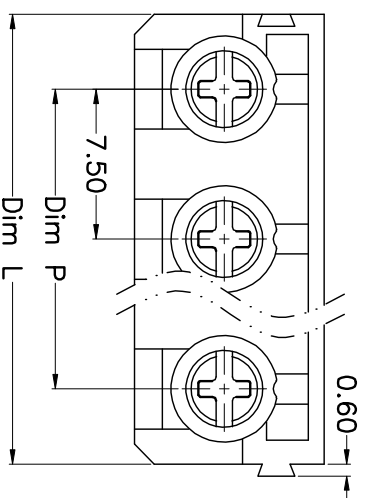


REV.	DESCRIPTION	DATE	DRAWN	APPROVED
A1	DWG.REL	2015.3.12	FANG	YANG



N=Number of Poles
 Dim P=(N-1)x7.50
 Dim L=Nx7.50

Poles	Dim P	Dim L
2-6P	±0.10	±0.15
7-12P	±0.20	±0.20
13-18P	±0.25	±0.30
19-24P	±0.30	±0.40

GENERAL TOLERANCE ANGLE TOLERANCE

X	±0.5	X	±5°
X	±0.3	X	±3°
.XX	±0.1	.XX	±1°

DRAWING TYPE	CUSTOMER
SCALE	1:1
DRAWING NO.	SHEET 1 OF 1

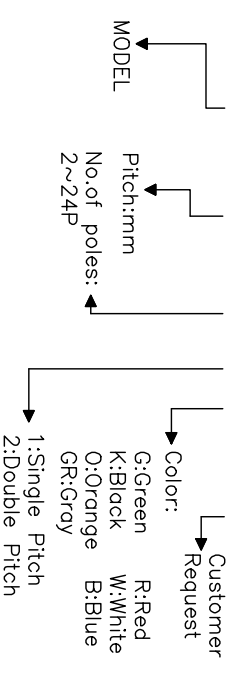
- Material
 - ① Screws : M3.0 steel, Zinc plated,
 - ② “-/+” slot type
 - ③ Housing : PA66, UL94V-0
 - ④ Reed : Phosphor bronze, Ni plated or stainless steel
 - ⑤ Pin header : Brass, Tin plated

- Electrical UL IEC
 - Rated voltage : 300V 450V
 - Rated current : 15A 24A
 - Insulation resistance: 500MΩ/DC500V
 - Withstanding Voltage : AC2500V/1min
 - Wire range: 24-14AWG 2.5mm²

- Mechanical
 - Operating temperature: -30°C to +105°C
 - Soldering temperature: 250°C ± 5/5sec
 - Torque: 0.5N.m (4.43Lb.in)
 - Strip length: 4.5-5mm

HOW TO ORDER

KF360-7.5-XXP-1 X-XXXXX



PROJECTION	TITLE
UNITS	mm
SHEET SIZE	A4
SERIES	KF360

KF360-7.5-XXP

科奕科技有限公司