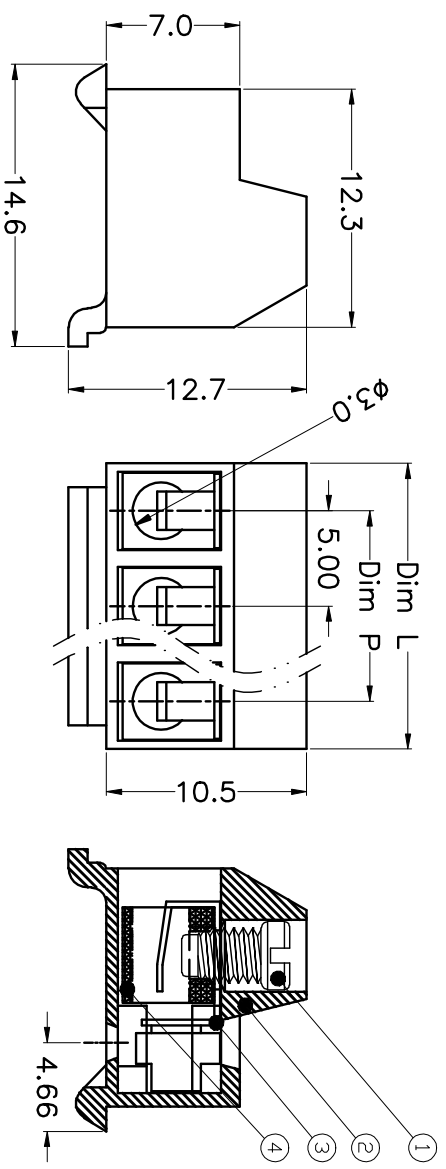
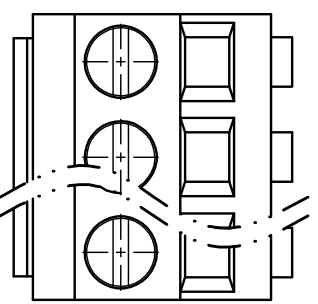


REV.	DESCRIPTION	DATE	DRAWN	APPROVED
A1	DWG.REL	2015.3.12	FANG	YANG



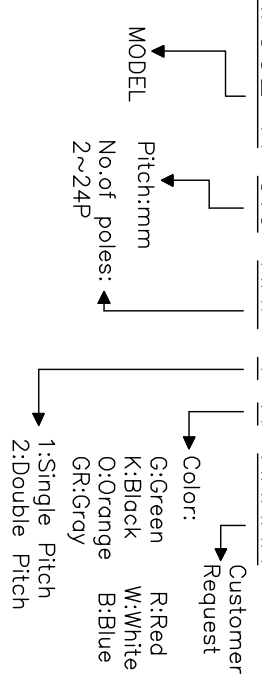
- Material
 ①Screws : M3.0 steel, Zinc plated,
 “_” slot type
 ②Housing : PA66, UL94V-0
 ③Reed : Phosphor bronze, Ni plated
 ④Pin header : Brass, Tin plated

- Electrical
 UL IEC
 Rated voltage : 300V 250V
 Rated current : 10A 24A
 Insulation resistance: 500MΩ/DC500V
 Withstanding Voltage : AC2000V/1min
 Wire range: 28-14AWG 2.5mm²

- Mechanical
 Operating temperature: -40℃~+105℃
 Soldering temperature: 250℃±5/5sec
 Torque: 0.5N.m (4.43lb.in)
 Strip length: 5-6mm

HOW TO ORDER

KF332-A-5.0-XXP-1 X-XXXXX



N=Number of Poles
 Dim P=(N-1)x5.00
 Dim L=Nx5.00

Poles	Dim P	Dim L
2-6P	±0.10	±0.15
7-12P	±0.20	±0.20
13-18P	±0.25	±0.30
19-24P	±0.30	±0.40

GENERAL TOLERANCE	ANGLE TOLERANCE	TOLERANCE
X	X°	±5°
.X	.X°	±3°
.XX	.XX°	±1°

DRAWING TYPE	CUSTOMER
SCALE	1:1
SHEET	1 OF 1
DRAWING NO.	

PROJECTION	TITLE
UNITS	mm
SHEET SIZE	A4
SERIES	KF332-A
KF332-A-5.0-XXP	

科奕科技有限公司