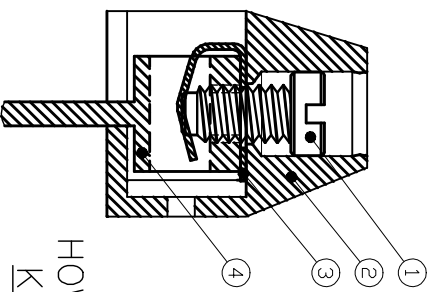
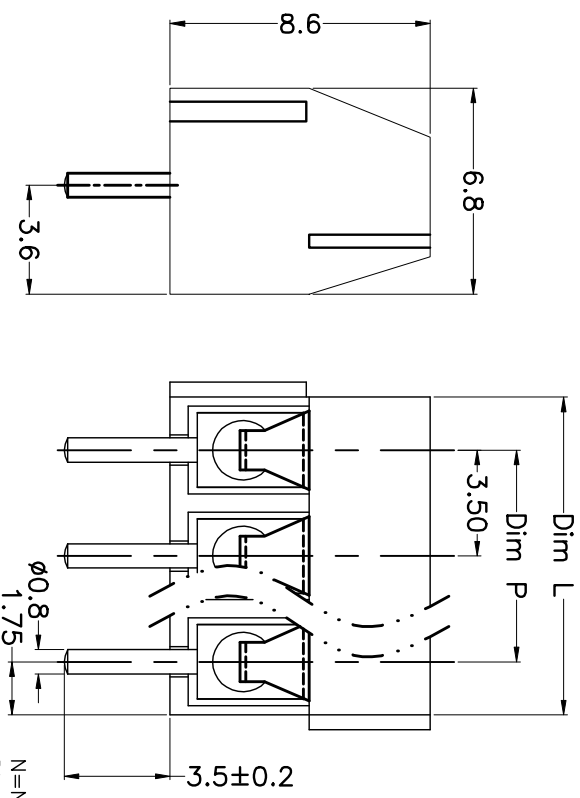
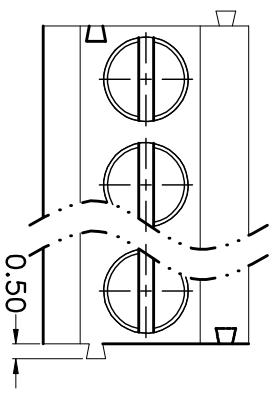
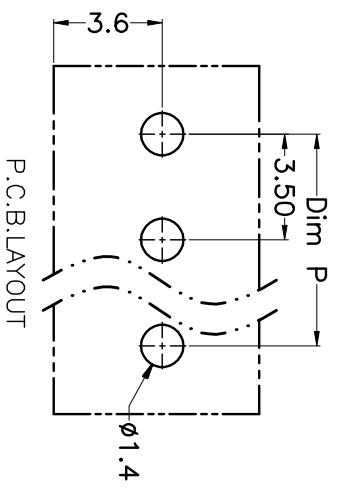


REV.	DESCRIPTION	DATE	DRAWN	APPROVED
A1	DWG.REL	2015.3.12	FANG	YANG



N=Number of Poles
 Dim A P=(N-1)x3.50
 Dim L L=Nx3.50

Poles	Dim A	Dim P	Dim L
2-6P	±0.10	±0.15	
7-12P	±0.20	±0.20	
13-18P	±0.25	±0.30	
19-24P	±0.30	±0.40	



GENERAL TOLERANCE		ANGLE TOLERANCE	
X	±0.5	X	±5°
X	±0.3	X	±3°
.XX	±0.1	.XX	±1°

DRAWING TYPE	CUSTOMER
SCALE	1:1
DRAWING NO.	SHEET 1 OF 1

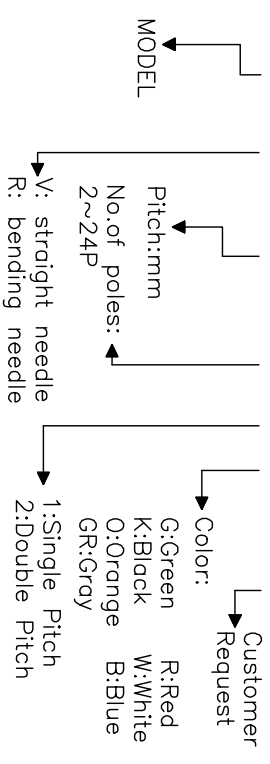
- Material
 - ⊙Screws : M2.0 steel, Zinc plated,
 - “_” slot type
 - ⊙Housing : PA66, UL94V-0
 - ⊙Reed : Phosphor bronze, Ni plated or stainless steel
 - ⊙Pin header : Brass, Tin plated

- Electrical
 - UL IEC
 - Rated voltage : 300V 130V
 - Rated current : 7A 10A
 - Insulation resistance: 500MΩ/DC500V
 - Withstanding Voltage : AC1250V/1min
 - Wire range: 24-18AWG 1.0mm²

- Mechanical
 - Operating temperature: -40°C ~ +105°C
 - Soldering temperature: 250°C ±5 / 5sec
 - Torque: 0.2N.m (1.77Lb.in)
 - Strip length: 5-6mm

HOW TO ORDER

KF350 V - 3.5 - XXP - 1 X - XXXXX



PROJECTION	TITLE
UNITS mm	KF350V-3.5-XXP
SHEET SIZE A4	SERIES KF350V

科奕科技有限公司