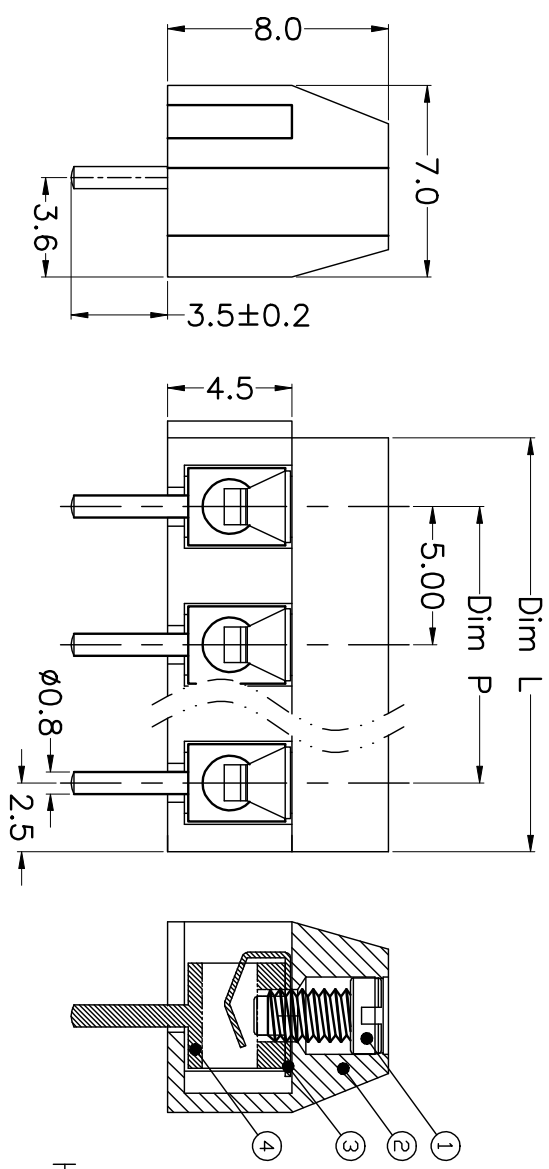
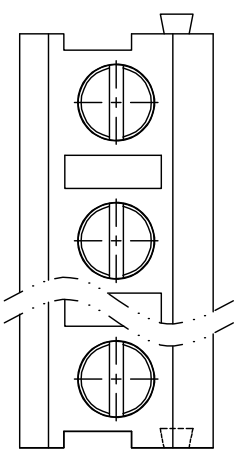
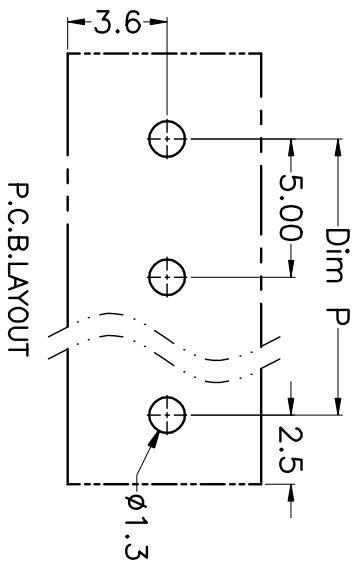


REV.	DESCRIPTION	DATE	DRAWN	APPROVED
A1	DWG.REL	2015.3.12	FANG	YANG



N=Number of Poles
Dim P=(N-1)x5.00
Dim L=Nx5.00

Poles	Dim P	Dim L
2-6P	±0.10	±0.15
7-12P	±0.20	±0.20
13-18P	±0.25	±0.30
19-24P	±0.30	±0.40



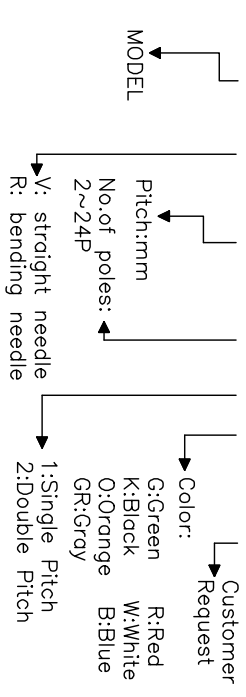
- Material
 @Screws : M2.0 steel, Zinc plated,
 “_” slot type
 @Housing : PA66, UL94V-0
 @Reed : Phosphor bronze, Ni plated
 or stainless steel
 @Pin header : Brass, Tin plated

- Electrical UL IEC
 Rated voltage : 300V 250V
 Rated current : 10A 12A
 Insulation resistance: 500MΩ/DC500V
 Withstanding Voltage : AC1500V/1min
 Wire range: 22-16AWG 1.5mm²

- Mechanical
 Operating temperature: -40°C ~ +105°C
 Soldering temperature: 250°C ±5 / 5sec
 Torque: 0.2N.m (1.77Lb.in)
 Strip length: 4.5-5mm

HOW TO ORDER

KF125 V -5.0-XXP-1 X-XXXXXX



GENERAL TOLERANCE ANGLE TOLERANCE

X	±0.5	X	±5°
.X	±0.3	.X	±3°
.XX	±0.1	.XX	±1°

DRAWING TYPE	CUSTOMER	SHEET	1 OF 1
SCALE	1:1		
DRAWING NO.			

PROJECTION	TITLE
UNITS	mm
SHEET SIZE	A4
SERIES	KF125V
KF125V-5.0-XXP	

科奕科技有限公司