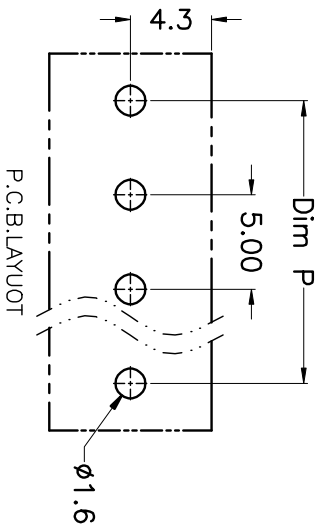
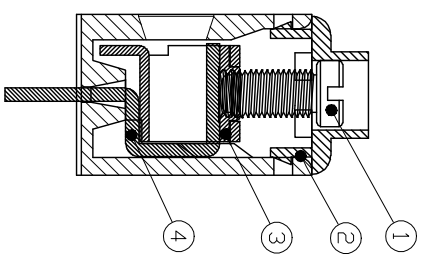
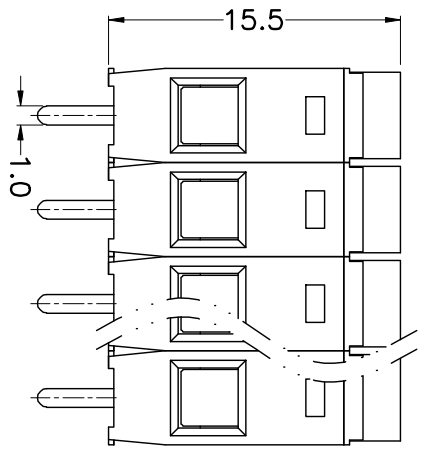
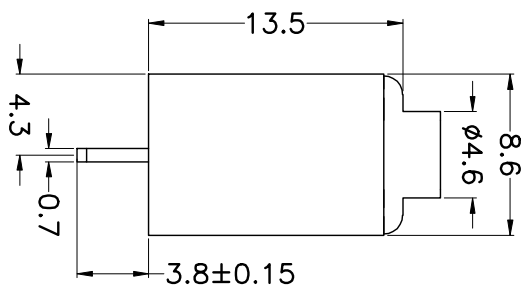
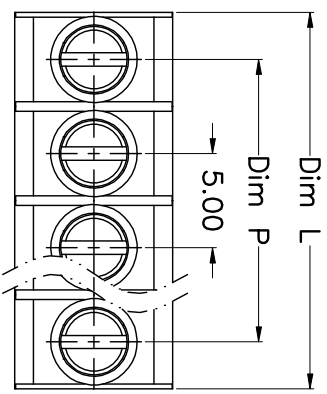


REV.	DESCRIPTION	DATE	DRAWN	APPROVED
A1	DWG.REL	2015.3.12	FANG	YANG



N=Number of Poles
Dim P=(N-1)x5.00
Dim L=Nx5.00

Poles	Dim P	Dim L
2-6P	±0.10	±0.15
7-12P	±0.20	±0.20
13-18P	±0.25	±0.30
19-24P	±0.30	±0.40

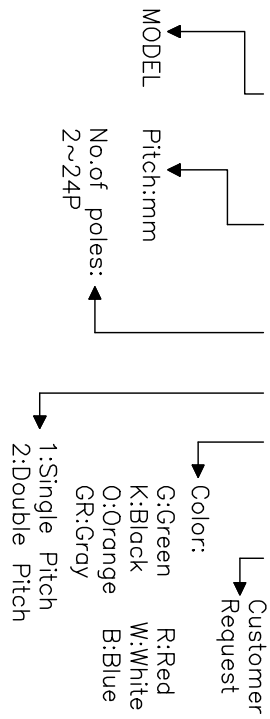
- Material
 ØScrews : M2.5 steel, Zinc plated,
 “-” slot type
 ØHousing : PA66, UL94V-0
 ØClamp : Steel, Zinc plated
 ØPin header : Brass, Tin plated

- Electrical UL IEC
 Rated voltage : 300V 250V
 Rated current : 15A 22A
 Insulation resistance: 500MΩ/DC500V
 Withstanding Voltage : AC2000V/1min
 Wire range: 22-14AWG 0.5-2.5mm²

- Mechanical
 Operating temperature:-40°C~+105°C
 Soldering temperature:250°C±5/5sec
 Torque: 0.4N.m (3.54Lb.in)
 Strip length: 5-6mm

HOW TO ORDER

KF169-5.0-XXP-1 X-XXXXX



GENERAL TOLERANCE ANGLE TOLERANCE

X.	±0.5	X.	±5'
.X	±0.3	.X'	±3'
.XX	±0.1	.XX'	±1'

DRAWING TYPE	CUSTOMER	SHEET	1 OF 1
SCALE	1:1	SHEET	1 OF 1
DRAWING NO.			

PROJECTION	TITLE
UNITS mm	KF169-5.0-XXP
SHEET SIZE A4	SERIES KF169

科奕科技有限公司