

REV.	DESCRIPTION	DATE	DRAWN	APPROVED
A1	DWG.REL	2015.3.12	FANG	YANG

- Material
  - ØScrews : M2.5 steel, Zinc plated,
  - “\_” slot type
  - ØHousing : PA66, UL94V-0
  - ØReed : Phosphor bronze, Ni plated or stainless steel
  - ØPin header : Brass, Tin plated

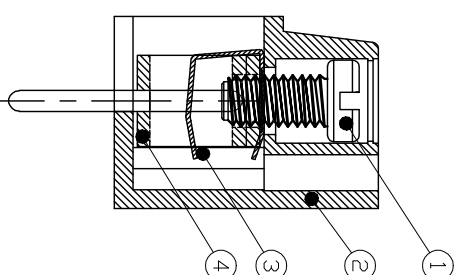
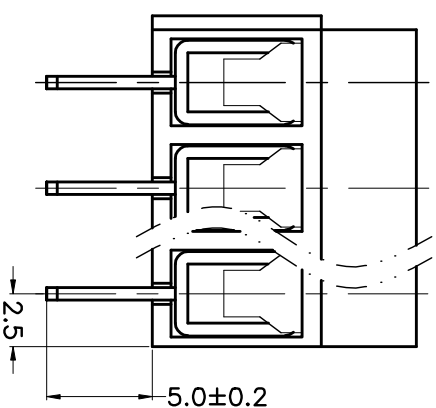
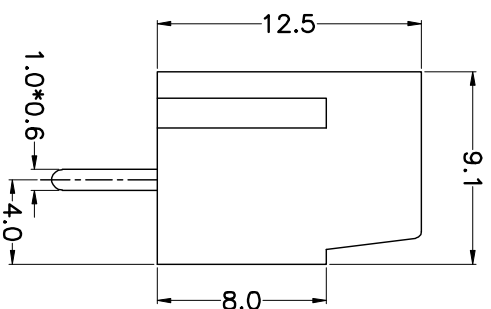
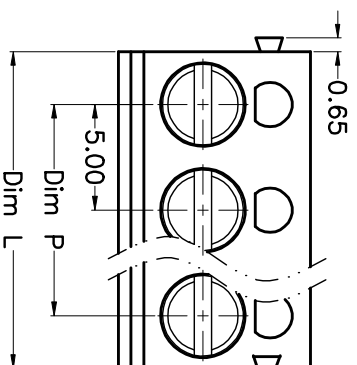
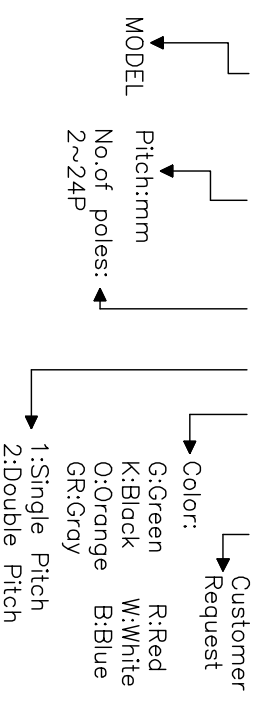
- Electrical
 

UL	IEC
Rated voltage : 300V	250V
Rated current : 12A	24A
Insulation resistance: 500MΩ/DC500V	
Withstanding Voltage : AC2000V/1min	
Wire range: 22-14AWG	2.5mm <sup>2</sup>

- Mechanical
  - Operating temperature: -30°C~+120°C
  - Soldering temperature: 250°C±5/5sec
  - Torque: 0.4N.m (3.54Lb.in)
  - Strip length: 4.5-5mm

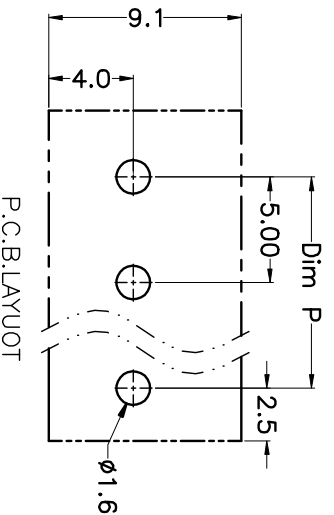
### HOW TO ORDER

KF305-5.0-XXP-1 X-XXXXXX



N=Number of Poles  
Dim P=(N-1)x5.00  
Dim L=Nx5.00

Poles	Dim P	Dim L
2-6P	±0.10	±0.15
7-12P	±0.20	±0.20
13-18P	±0.25	±0.30
19-24P	±0.30	±0.40



### GENERAL TOLERANCE

GENERAL TOLERANCE	ANGLE TOLERANCE	TOLERANCE
X	X	±5'
X	X	±3'
XX	XX	±1'

DRAWING TYPE	CUSTOMER	SHEET	1 OF 1
SCALE	1:1		
DRAWING NO.			

科奕科技有限公司