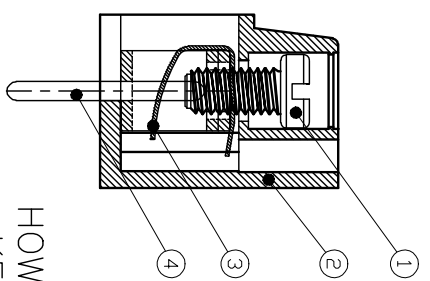
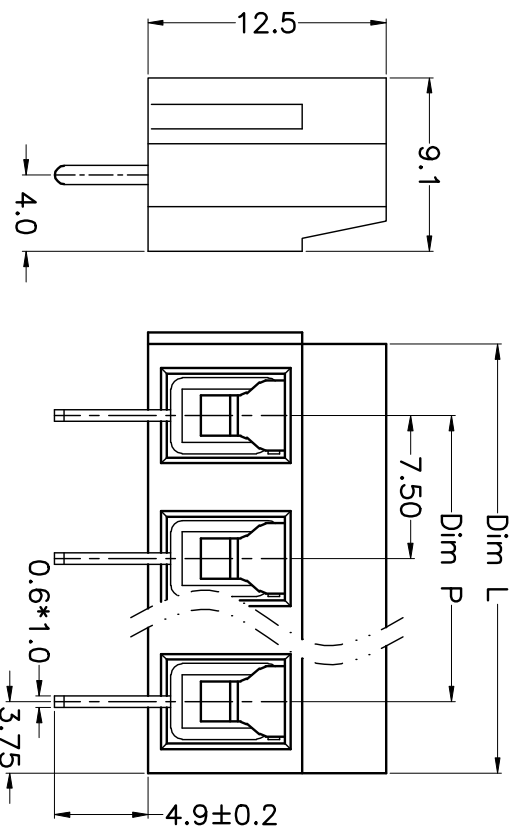
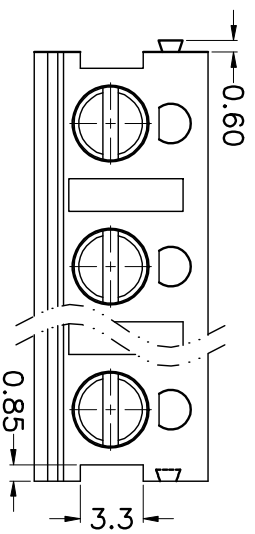


REV.	DESCRIPTION	DATE	DRAWN	APPROVED
A1	DWG.REL	2015.3.12	FANG	YANG



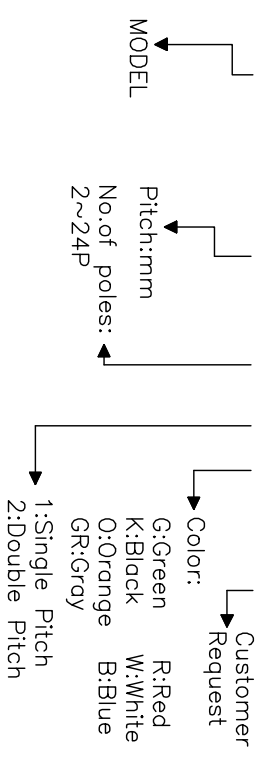
- Material
 - ①Screws : M2.5 steel, Zinc plated, “_” slot type
 - ②Housing : PA66, UL94V-0
 - ③Reed : Phosphor bronze, Ni plated or stainless steel
 - ④Pin header : Brass, Tin plated

- Electrical
 - UL IEC
 - Rated voltage : 300V 450V
 - Rated current : 12A 24A
 - Insulation resistance: 500MΩ/DC500V
 - Withstanding Voltage : AC2500V/1min
 - Wire range: 22-14AWG 2.5mm²

- Mechanical
 - Operating temperature: -30°C ~ +120°C
 - Soldering temperature: 250°C ±5 / 5sec
 - Torque: 0.4N.m (3.54Lb.in)
 - Strip length: 4.5-5mm

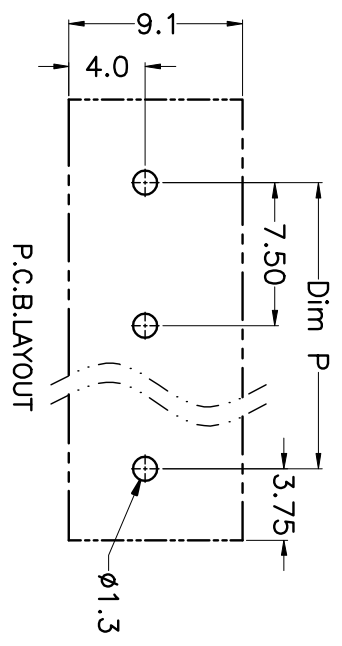
HOW TO ORDER

KF705A - 7.5 - XXP - 1 X - XXXXX



N=Number of Poles
Dim P=(N-1)x7.50
Dim L=Nx7.50

Poles	Dim P	Dim L
2-6P	±0.10	±0.15
7-12P	±0.20	±0.20
13-18P	±0.25	±0.30
19-24P	±0.30	±0.40



GENERAL TOLERANCE	ANGLE TOLERANCE
X: ±0.5	X: ±5°
.X: ±0.3	.X: ±3°
.XX: ±0.1	.XX: ±1°

DRAWING TYPE	CUSTOMER
SCALE	1:1
SHEET	1 OF 1
DRAWING NO.	

PROJECTION	TITLE
UNITS: mm	KF705A-7.5-XXP
SHEET SIZE: A4	SERIES: KF705A

科奕科技有限公司