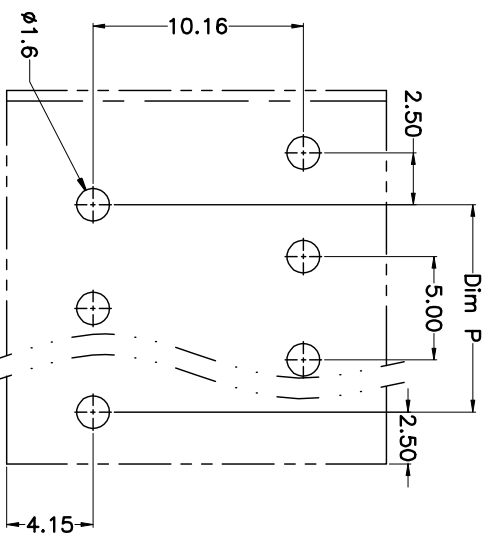
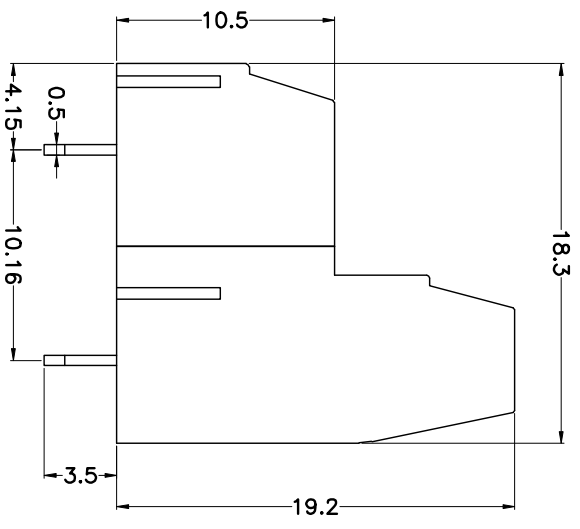
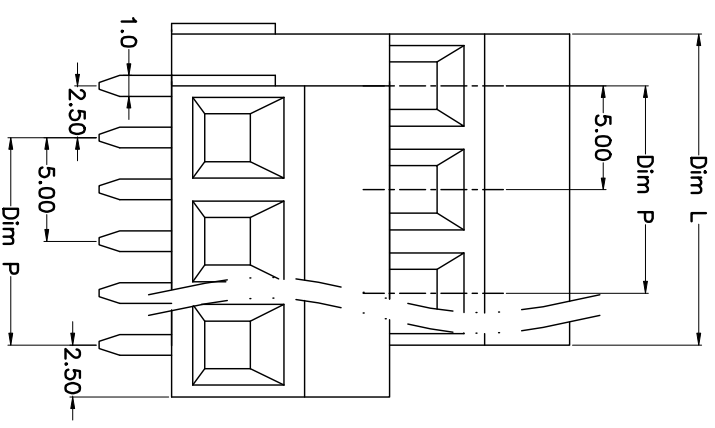


REV.	DESCRIPTION	DATE	DRAWN	APPROVED
A1	DWG.REL	2015.3.12	FANG	YANG



N=Number of Poles
Dim P=(N-1)x5.0
Dim L=Nx5.0

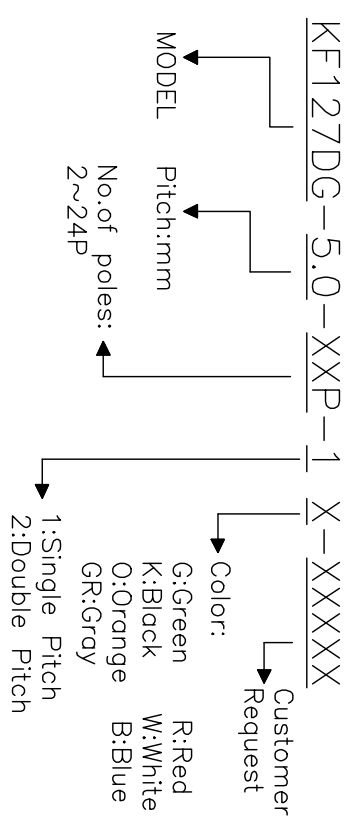
Poles	Dim P	Dim L
2-6P	±0.10	±0.15
7-12P	±0.20	±0.20
13-18P	±0.25	±0.30
19-24P	±0.30	±0.40

- Material
Screws : M2.5 steel, Zinc plated,“-” slot type
Clamp : Brass, Ni plated
Pin header : Brass, Tin plated
Housing : PA66, UL94V-0

- Electrical
UL IEC
Rated voltage : 300V 250V
Rated current : 12A 15A
Insulation resistance: 500MΩ/DC500V
Withstanding Voltage : AC2000V/1min
Wire range: 26-14AWG 2.5mm²

- Mechanical
Operating temperature:-40°C~+105°C
Soldering temperature:250°C±5/5sec
Torque: 0.4N.m (3.54Lb.in)
Strip length: 5-6mm

HOW TO ORDER



GENERAL TOLERANCE	ANGLE TOLERANCE
X. ±0.5	X. ±5°
.X ±0.3	.X ±3'
.XX ±0.1	.XX ±1'

DRAWING TYPE	CUSTOMER
SCALE 1:1	SHEET 1 OF 1

PROJECTION	TITLE
UNITS mm	KF127DG-5.0-XXP
SHEET SIZE A4	SERIES KF127DG

科奕科技有限公司