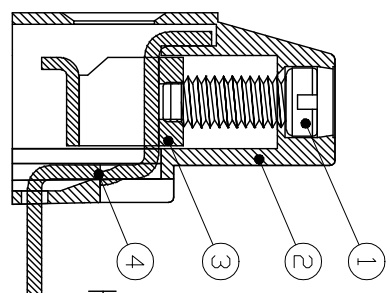


REV.	DESCRIPTION	DATE	DRAWN	APPROVED
A1	DWG.REL	2015.3.12	FANG	YANG

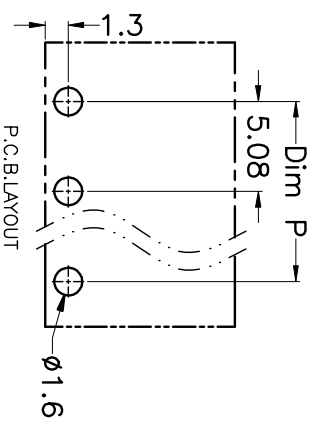
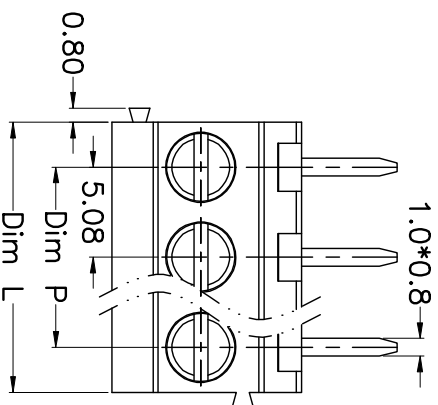
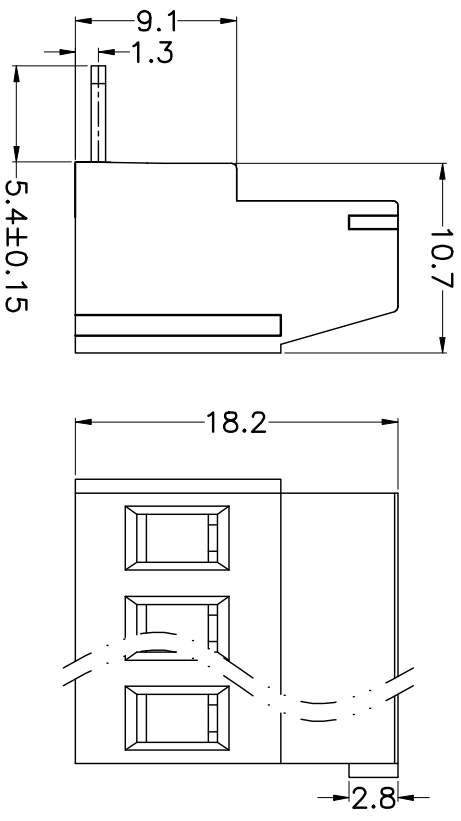
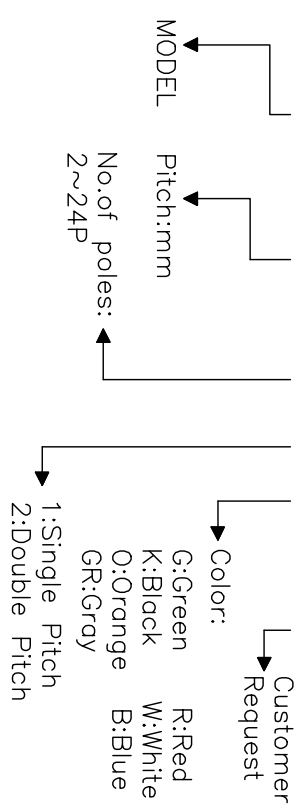
- Material
 - ⊙Screws : M2.5 steel, Zinc plated,
 - “-” slot type
 - ⊙Housing : PA66, UL94V-0
 - ⊙Clamp : Steel, Zinc plated
 - ⊙Pin header : Brass, Tin plated
- Electrical

UL	IEC
Rated voltage : 300V	250V
Rated current : 20A	20A
Insulation resistance: 500MΩ/DC500V	
Withstanding Voltage : AC2000V/1min	
Wire range: 24-12AWG	4.0mm ²



HOW TO ORDER

KF129R-5.08-XXP-1 X-XXXXX



N=Number of Poles
Dim P=(N-1)x5.08
Dim L=Nx5.08

Poles	Dim P	Dim L
2-6P	±0.10	±0.15
7-12P	±0.20	±0.20
13-18P	±0.25	±0.30
19-24P	±0.30	±0.40

GENERAL TOLERANCE

	ANGLE TOLERANCE
X. ±0.5	X. ±5'
.X ±0.3	.X ±3'
.XX ±0.1	.XX ±1'

DRAWING TYPE	CUSTOMER
SCALE	1:1
SHEET	1 OF 1
DRAWING NO.	

PROJECTION	TITLE
UNITS mm	KF129R-5.08-XXP
SHEET SIZE A4	SERIES KF129R

科奕科技有限公司