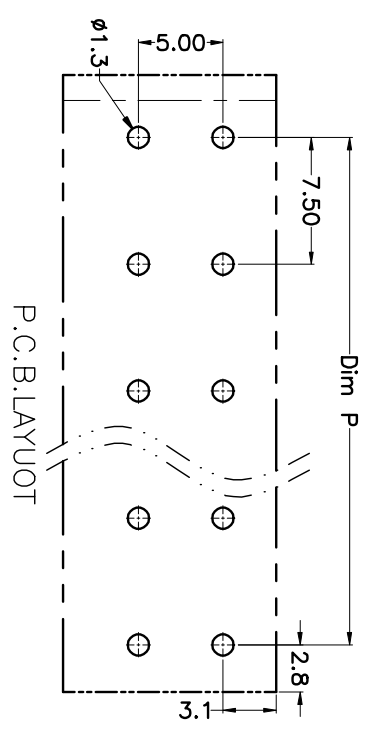
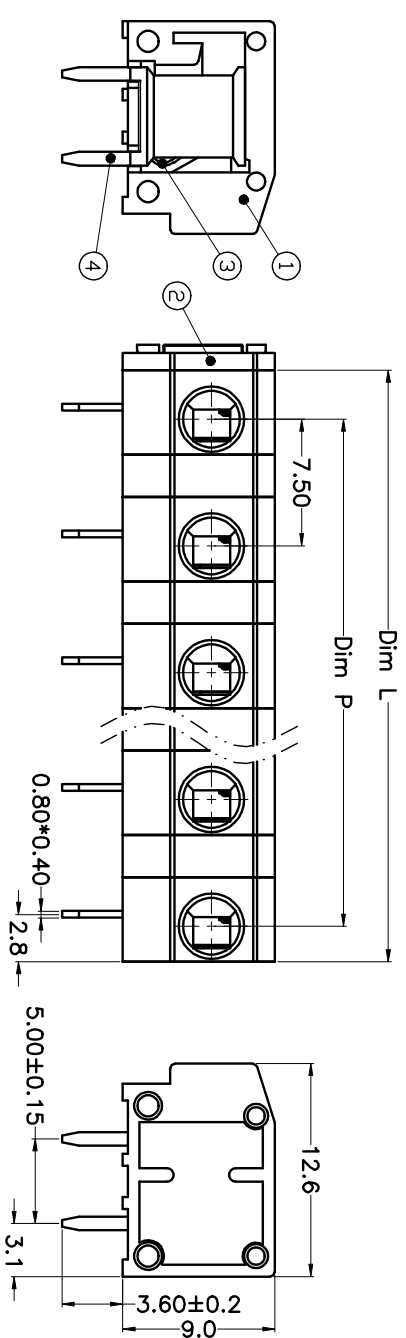
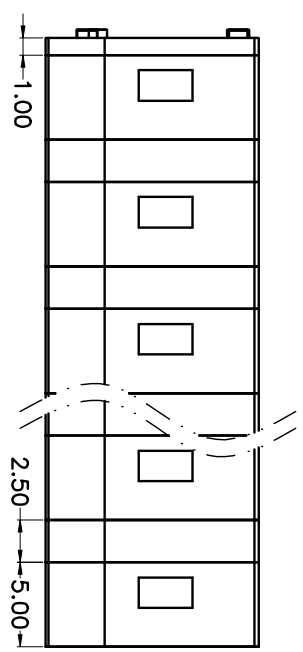


版本	修订内容	日期	绘图	批准
A1	DWG. B01	2016/9/12	方志远	梅志刚



N=Number of Poles
 Dim P=(N-1)X7.50
 Dim L=Nx7.50-2.5

Poles	Dim P	Dim L
2-6P	±0.10	±0.15
7-12P	±0.20	±0.20
13-18P	±0.25	±0.30
19-24P	±0.30	±0.40

尺寸公差:	±0.5 X. ±0.3 X. ±0.1 .XX	制造公差:	±5° X. ±3° X. ±1° .XX'
-------	---	-------	---------------------------------------

制图标准	AUTO CAD	制图	1\1
------	----------	----	-----

比例	1:1	图框	1\1
----	-----	----	-----

图框编号	
------	--

- Material
 - ①Housing : PA66, UL94V-0
 - ②Cover : PA66, UL94V-0
 - ③Reed : Stainless steel
 - ④Pin header : Brass, Tin plated

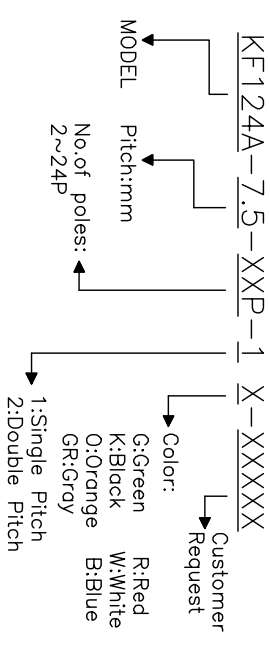
- Electrical

UL	IEC
Rated voltage : 300V	450V
Rated current : 5A	15A

Insulation resistance: 500MΩ/DC500V
 Withstanding Voltage : AC2000V/1min
 Wire range: 20-18AWG 1.5mm²

- Mechanical
 - Operating temperature:-40°C~+105°C
 - Soldering temperature:250°C±5/5sec
 - Strip length: 9-10mm

HOW TO ORDER



图框编号	图框	比例	1\1
制图标准	AUTO CAD	制图	1\1
尺寸公差:	±0.5 X. ±0.3 X. ±0.1 .XX	制造公差:	±5° X. ±3° X. ±1° .XX'
图框编号		图框	1\1

科奕科技有限公司