

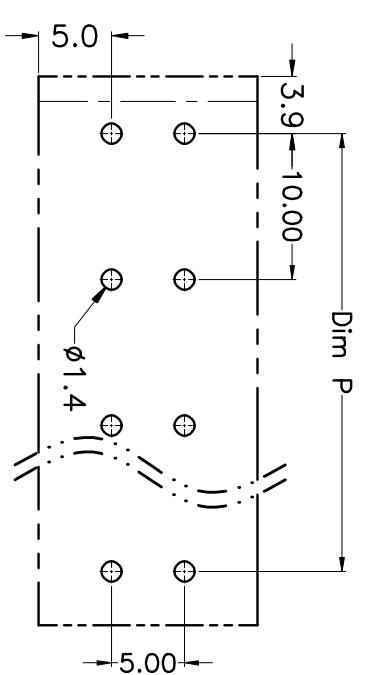
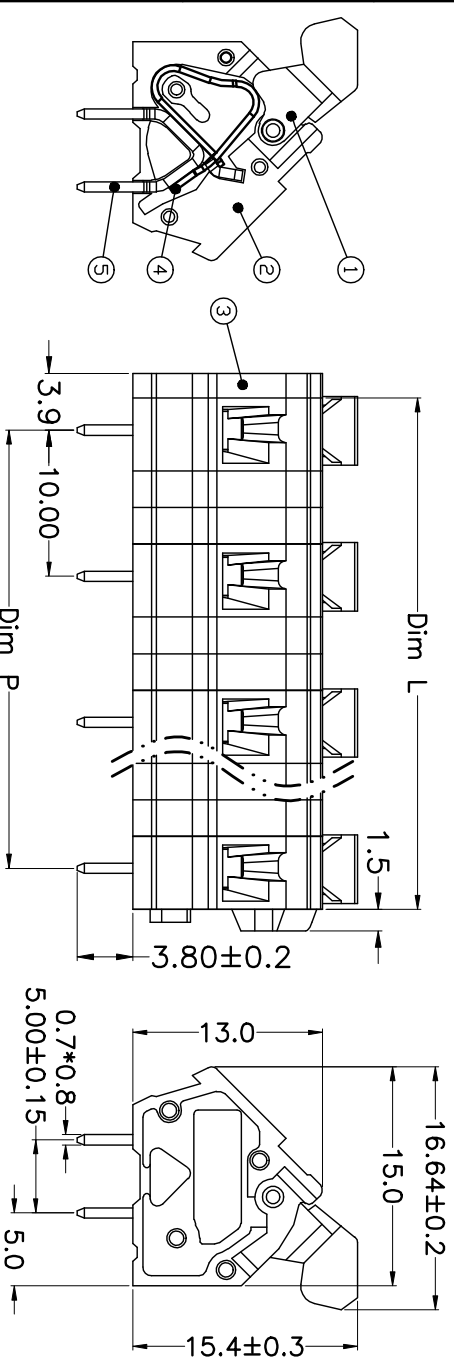
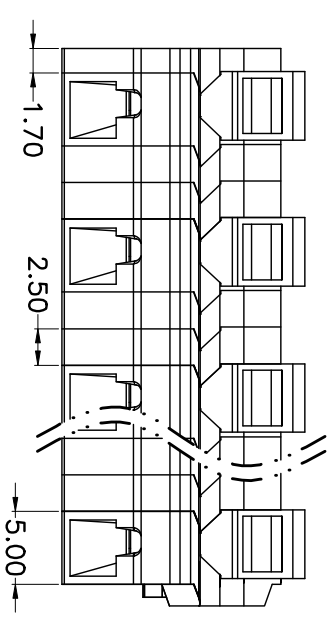
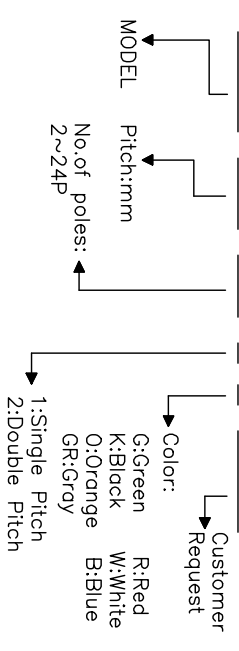
| REV. | DESCRIPTION | DATE | DRAWN | APPROVED |
|------|-------------|-----------|-------|----------|
| A1 | DWG.REL | 2015.3.12 | FANG | YANG |

- Material
 - ⊙Button : PA66, UL94V-0
 - ⊙Cover : PA66, UL94V-0
 - ⊙Housing : PA66, UL94V-0
 - ⊙Reed : Stainless steel
 - ⊙Pin header : Brass, Tin plated

- Electrical
 - UL IEC
 - Rated voltage : 300V 1000V
 - Rated current : 15A 17A
 - Insulation resistance: 500MΩ/DC500V
 - Withstanding Voltage : AC2000V/1min
 - Wire range: 28-12AWG 2.5mm²
- Mechanical
 - Operating temperature: -40°C~+105°C
 - Soldering temperature: 250°C±5/5sec
 - Strip length: 5-6mm

HOW TO ORDER

KF188-10.0-XXP-1 X-XXXXX



N=Number of Poles
 Dim P=(N-1)x10.00
 Dim L=Nx10.00-5

| Poles | Dim P | Dim L |
|--------|-------|-------|
| 2-6P | ±0.10 | ±0.15 |
| 7-12P | ±0.20 | ±0.20 |
| 13-18P | ±0.25 | ±0.30 |
| 19-24P | ±0.30 | ±0.40 |

P.C.B.LAYOUT

| GENERAL TOLERANCE | | ANGLE TOLERANCE | |
|-----------------------|----------|--------------------|---------|
| X: ±0.5 | .XX ±0.1 | X: ±5' | .XX ±1' |
| DRAWING TYPE CUSTOMER | | SCALE SHEET 1 OF 1 | |
| DRAWING NO. | | DRAWING NO. | |

科奕科技有限公司